

PULLEY BLOCKS & SAIL HANDLING

SAILING PULLEY BLOCKS & ACCESSORIES

Pulley Block (Holt Plain Block 60)

PRODUCT CODE: SM-0529 PRICE £18.40



Sailing pulley block, Holt Plain Block 60. Line size up to 14mm. Perfect for cruising, main sheets, vang and control tackle such as downhauls. Designed using composite materials for high performance and low weight.

- Rope size up to 14mm
 - Load rating 350kg
 - Breaking load 1200kg
-

Ratchet Pulley Block (clockwise / port)

PRODUCT CODE: SM-0527 PRICE £52.84



Ratchet pulley block, Holt Line 75 with ratchet (clockwise / port) with on-off under load capability. Line size up to 12mm. Conventional ball bearing design with long lasting characteristics.

- Rope size up to 12mm
 - Load rating 300kg
 - Breaking load 1100kg
-

Ratchet Pulley Block (anti-clockwise)

PRODUCT CODE: SM-0526 PRICE £52.58



Ratchet pulley block, Holt Line 75 with ratchet (anti-clockwise) with on-off under load capability. Line size up to 12mm. Conventional ball bearing design with long lasting characteristics.

- Rope size up to 12mm
 - Load rating 300kg
 - Breaking load 1100kg
-

Fiddle Swivel Block

PRODUCT CODE: SM-0521 PRICE £31.76



Fiddle swivel block, Holt Line 57 fiddle swivel pulley block, line size up to 12mm. Conventional ball bearing design with long lasting characteristics.

- Rope size up to 12mm
 - Load rating 400kg
 - Breaking load 950kg
-

SAILING PULLEY BLOCKS & ACCESSORIES

Main Sheet Block

PRODUCT CODE: SM-0522 PRICE £67.78



Main sheet block, Holt Line 57 single swivel alloy cam becket, line size up to 12mm. Conventional ball bearing design with long lasting characteristics.

- Rope size up to 12mm
- Load rating 210kg
- Breaking load 950kg
- Adjustable cam cleat angle

Pulley Swivel Block (with becket)

PRODUCT CODE: SM-0524 PRICE £18.58



Pulley swivel block with becket, Holt Line 39 single swivel, line size up to 10mm. Conventional ball bearing design with long lasting characteristics.

- Rope size up to 10mm
- Load rating 230kg
- Breaking load 820kg

Pulley Swivel Block (Holt Line 28)

PRODUCT CODE: SM-0525 PRICE £15.42



Pulley swivel block, Holt Line 28 single swivel, line size up to 8mm. Conventional ball bearing design with long lasting characteristics.

- Rope size up to 8mm
- Load rating 180kg
- Breaking load 750kg

Pulley Swivel Block (Holt Line 39)

PRODUCT CODE: SM-0523 PRICE £14.50



Pulley swivel block, Holt Line 39 single swivel, line size up to 10mm. Conventional ball bearing design with long lasting characteristics.

- Rope size up to 10mm
- Load rating 230kg
- Breaking load 820kg

SAILING PULLEY BLOCKS & ACCESSORIES

Ratchet Pulley Block (Holt Line 57)

PRODUCT CODE: SM-0528 PRICE £32.47



Ratchet pulley block, Holt Line 57 with ratchet (anti-clockwise) with on-off under load capability. Line size up to 10mm. Conventional ball bearing design with long lasting characteristics.

- Rope size up to 10mm
 - Load rating 200kg
 - Breaking load 950kg
-

Pulley Block (Holt Line 75)

PRODUCT CODE: SM-0519 PRICE £35.06



Sailing pulley block, Holt Line 75 single swivel. Conventional ball bearing design with long lasting characteristics.

- Rope size up to 14mm
 - Load rating 330kg
 - Breaking load 1100kg
-

Fairlead (Stanchion Mounted)

PRODUCT CODE: SM-0511 PRICE £8.26



Stanchion mounted fairlead. For rope size up to 16mm diameter. This stanchion fairlead is intended for mounting to a stanchion or tube of 25mm or 1 inch diameter

- Rope size up to 16mm
 - Mounting to tube or stanchion of 25mm (or 1") diameter
 - Safe Working Load 150kg
-

Pulley Block (Stanchion Mounted)

PRODUCT CODE: SM-0510 PRICE £17.81



Stanchion mounted pulley block. For rope size up to 16mm diameter. This stanchion block has a ball and socket hinge allowing the pulley wheel to be oriented as needed. The mounting is suited to a stanchion or tube of 25mm or 1 inch diameter

- Rope size up to 16mm
 - Mounting to tube or stanchion of 25mm (or 1") diameter
-

SAILING PULLEY BLOCKS & ACCESSORIES

Double Pulley Block

PRODUCT CODE: SM-0520 PRICE £94.45



Double pulley block, Holt Line 75 double swivel, line size up to 14mm. Conventional ball bearing design with long lasting characteristics.

- Rope size up to 14mm
 - Load rating 600kg
 - Breaking load 1500kg
-

Block Support Springs (pair)

PRODUCT CODE: SM-0512 PRICE £2.14



Block support springs (pair). Holt HT4034 These spring supports are to keep pulley blocks away from decks and prevent grazing and damage to deck surfaces.

SAILING JAM CLEATS & CAM CLEATS

Aluminium Cam Cleat (HT91035)

PRODUCT CODE: SM-0515

PRICE £23.47



Aluminium Cam Cleat HT91035, Rope Diameter 5mm to 12mm This sailing cam cleat runs on 3 rows of ball bearings for superior strength and smooth running operation.

- Rope size 5 to 12mm
- Fixing size M5 or 4.8mm for self-tappers
- Safe Working Load 140kg
- Breaking Load 330kg

Auto Release Clamcleat (CL257)

PRODUCT CODE: SM-0507

PRICE £12.64



Auto release cleat for sailing. Clamcleat CL257. For rope size up to 6mm. The gripping part of the cleat is manufactured from aluminium, the base being manufactured from Nylon. This cleat flips up to release the rope when a set load is exceeded.

Base for 38mm Cam Cleats

PRODUCT CODE: SM-0517

PRICE £4.74



Base with stainless steel fairlead for 38mm cam cleat This base for cam cleats includes a stainless steel loop for routing lines through and keep them in place

- Fixing size M5 or 4.8mm for self-tappers

Cam Cleat (CL217Mk1)

PRODUCT CODE: SM-0499

PRICE £6.90



Side entry jam cleat for ropes, starboard. Camcleat CL217Mk1 for rope size up to 6mm. Manufactured from aluminium.

- Rope size 3 to 6mm
- Fixing size M4 or 4.2 for self-tappers

Cam Cleat Fairlead (HT91054)

PRODUCT CODE: SM-0516

PRICE £3.40



This fairlead for cam cleats attaches to the top of our Nautos cam cleats to keep your lines where they should be.

- Fixing size M5 or 4.8mm for self-tappers

SAILING JAM CLEATS & CAM CLEATS

Cam Cleat Holt (HT91025)

PRODUCT CODE: SM-0514

PRICE £18.55



Holt HT91025 Cam Cleat. This sailing cam cleat runs on 2 rows of ball bearings or smooth running operation.

- Rope size 5 to 10mm
 - Fixing size M5 or 4.8mm for self-tappers
-

Clam Cleat (CL223)

PRODUCT CODE: SM-0502

PRICE £2.39



Loop cleat for tightening ropes. Clamcleat CL223 for rope size up to 6mm. Manufactured from nylon. For tightening / taughtening ropes in many applications from awnings / tarpaulins to banners. These operate in a 'self-contained' way so do not need attaching to any base

- Rope size 3 to 6mm
-

Clamcleat (CL234)

PRODUCT CODE: SM-0504

PRICE £5.04



Loop cleat for tightening ropes. Clamcleat CL234 for rope size up to 11mm. Manufactured from nylon. For tightening / tightening ropes in many applications from awnings / tarpaulins to banners

- Rope size 6 to 11mm
-

Clamcleat (CL236AN)

PRODUCT CODE: SM-0505

PRICE £9.07



Roller jam cleat for ropes. Clamcleat CL236AN. For rope size up to 6mm. Manufactured from hard-anodized aluminium. This cleat incorporates a roller to guide the rope or line from a range of angles with smooth running operation.

- Rope size 3 to 6mm
 - Fixing size M5 or 4.8 for self-tappers
-

Clamcleat (CL258) Fine Line Starboard

PRODUCT CODE: SM-0508

PRICE £5.80



Fine line jam cleat (Starboard). Clamcleat CL258. For rope size up to 6mm. This jam cleat is manufactured from aluminium. These cleats are come in Port and Starboard versions.

- Rope size 3 to 6mm
 - Fixing size M4 or 4.2 for self-tappers
-

SAILING JAM CLEATS & CAM CLEATS

Clamcleat (CL259) Fine Line Port

PRODUCT CODE: SM-0509 PRICE £5.80



Fine line jam cleat (Port). Clamcleat CL259. For rope size up to 6mm. This jam cleat is manufactured from aluminium. These cleats are come in Port and Starboard versions.

- Rope size 3 to 6mm
- Fixing size M4 or 4.2 for self-tappers

Fairlead Cam Cleat (CL231)

PRODUCT CODE: SM-0503 PRICE £3.58



Fairlead cleat for rope size up to 8mm Clamcleat CL231. Manufactured from nylon.

- Rope size 4 to 8mm
- Fixing size M5 or 4.8 for self-tappers

Fairlead Cleat (CL203)

PRODUCT CODE: SM-0492 PRICE £2.24



Fairlead cleat CL203 for rope size up to 6mm. Manufactured from nylon.

- Rope size 3 to 6mm
- Fixing size M4 or 4.2 for self-tappers

Fairlead for 38mm Cam Cleats

PRODUCT CODE: SM-0518 PRICE £8.02



Fairlead for 38mm cam cleat with integrated base.This base for cam cleats includes a robust moulding and stainless steel loop smooth operation while keeping ropes and lines in place

- Fixing size M5 or 4.8mm for self-tappers

Fairlead Jam Cleat (CL211)

PRODUCT CODE: SM-0495 PRICE £6.08



Fairlead jam cleat for ropes. Camcleat CL211 For rope size up to 6mm. Manufactured from aluminium.

- Rope size 3 to 6mm
- Fixing size M5 or 4.8 for self-tappers

SAILING JAM CLEATS & CAM CLEATS

Fairlead Jam Cleat (CL211AN)

PRODUCT CODE: SM-0496 PRICE £6.82



Fairlead jam cleat for ropes. Camcleat CL211AN For rope size up to 6mm. Manufactured from aluminium with hard-anodized finish for great wear resistance and sea-water corrosion resistance.

- Rope size 3 to 6mm
- Fixing size M5 or 4.8 for self-tappers

Fairlead Jam Cleat (CL211MK2)

PRODUCT CODE: SM-0497 PRICE £5.36



Fairlead jam cleat for ropes. Clamcleat CL211MK2 For rope size up to 6mm. Manufactured from aluminium.

- Rope size 3 to 6mm
- Fixing size M5 or 4.8 for self-tappers

Fairlead Jam Cleat (CL211MK2AN)

PRODUCT CODE: SM-0498 PRICE £6.23



Fairlead jam cleat for ropes. Camcleat CL211MK2AN For rope size up to 6mm. Manufactured from hard-anodized aluminium.

- Rope size 3 to 6mm
- Fixing size M5 or 4.8 for self-tappers

Holt Wedge (HT91019)

PRODUCT CODE: SM-0513 PRICE £2.70



Wedge base for large cam cleat. HT91019

- Fixing size M5 or 4.8 for self-tappers

Jam Cleat (CL201)

PRODUCT CODE: SM-0491 PRICE £4.32



Sailing jam cleat CL201 for rope size up to 12mm. Manufactured from Nylon.

- Rope size 6 to 12mm
- Fixing size M6 or 6.3 for self-tappers

SAILING JAM CLEATS & CAM CLEATS

Jam Cleat midi (CL209)

PRODUCT CODE: SM-0494

PRICE £2.69

Jam cleat midi CL209 for rope size up to 6mm. Manufactured from nylon.



- Rope size 4 to 8mm
- Fixing size M5 or 4.8 for self-tappers

Mini Jam Cleat (CL204)

PRODUCT CODE: SM-0493

PRICE £1.73

Mini jam cleat CL204 for rope size up to 6mm. Manufactured from nylon.



- Rope size 3 to 6mm
- Fixing size M4 or 4.2 for self-tappers

Sailing Jam Cleat (CL222AN)

PRODUCT CODE: SM-0501

PRICE £4.60

Clamcleat CL222AN rope jam cleat manufactured from anodized aluminium. Suitable for rope diameters from 3 to 6mm. The aluminium material provides a complete answer to rope burn - they are unaffected by the heat generated by a rope surging back through a cleat. Good resistance to corrosion in a marine environment.



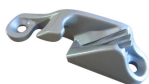
- Rope size 3 to 6mm
- Fixing size M4 or 4.2mm for self-tappers

Side Entry Jam Cleat (CL217Mk1)

PRODUCT CODE: SM-0500

PRICE £6.90

Side entry jam cleat for ropes, port. Camcleat CL217Mk1 for rope size up to 6mm. Manufactured from aluminium.



- Rope size 3 to 6mm
- Fixing size M4 or 4.2 for self-tappers

FIXINGS & FASTENINGS

BOLTS & SCREWS

Long Eye Bolt, 316 Stainless Steel, Marine Grade

Long eye bolt manufactured from 316 stainless steel. Including nut and washer



- 316 (marine-grade) stainless
- Nut and washer included

Size	Each	
	Product Code	Price
M6x40	SM-0424	£2.86
M6x60	SM-0425	£2.69
M6x80	SM-0426	£2.26
M8x80	SM-0427	£2.99
M8x100	SM-0428	£4.15
M10x100	SM-0429	£5.90
M12x120	SM-0430	£6.23

Raised Slot Countersunk Set Screws, Stainless Steel (316) A4-Marine Grade



Raised Slot Countersunk Set Screws in Marine Grade 316 Stainless Raised slot countersunk set screws, ideal for many areas around the boat, both above deck and below deck. The raised slot countersunk heads are preferred in many cases for their traditional look for fitting cleats, fairleads and many other deck fittings. The marine grade of these screws will ensure the best possible resistance against corrosion and staining in marine environments. These raised slot countersunk set screws come in standard metric threads, and are compatible with our nyloc nuts and regular nuts. When selecting the correct size of screw, as a general guide first look at the diameter of the fixing hole in the item to be attached, and the best size is usually the screw that just fits.

Size	Each	
	Product Code	Price
M4X16	SM-0190	£0.11
M4X20	SM-0188	£0.13
M4X30	SM-0176	£0.20
M4X60	SM-0287	£0.41
M5X20	SM-0189	£0.23
M5X30	SM-0175	£0.40
M6X40	SM-0191	£0.56
M6X60	SM-0192	£0.96

Set-Screws Slot Pan-Head Stainless Steel (316) A4-Marine Grade



Our Marine-Grade A4 stainless steel pan-head slot set-screws provide maximum corrosion resistance for salt-water marine environments. The superior corrosion resistance of these A4 grade set-screws make them a great choice for sailing, motor boating and other water-sports applications. Also popular with 4x4 and off-roading enthusiasts.

Size	Each	
	Product Code	Price
M5X25	SM-0031	£0.18
M6X30	SM-0032	£0.36
M6X60	SM-0068	£0.77
M8X40	SM-0033	£0.88

Stainless Steel Countersunk Socket Set Screws



Stainless Steel Countersunk Socket Set Screws Stainless steel countersunk socket set screws. Manufactured from 316 (marine-grade) stainless steel, these set-screws will not suffer from staining. These stainless steel countersunk socket set screws are made to DIN standard 7991. They are fully threaded as this gives the most versatility around the boat. These set-screws are ideal for deck fittings such as cleats and fairleads.

Size	Each	
	Product Code	Price
M3x10	SM-0080	£0.05
M3X16	SM-0138	£0.05
M3X20	SM-0139	£0.06
M4X10	SM-0140	£0.06
M4X16	SM-0141	£0.08
M4X20	SM-0064	£0.12
M5X16	SM-0102	£0.17
M5X25	SM-0021	£0.17
M6X20	SM-0101	£0.16
M6X30	SM-0007	£0.29
M6X40	SM-0147	£0.40
M6X60	SM-0039	£0.62
M8X40	SM-0008	£0.46
M8X60	SM-0148	£1.00
M10X60	SM-0149	£1.04
M10X80	SM-0150	£1.66

Stainless Steel Hex Set Screw in 316 (A4 Marine Grade)



Stainless Steel Hex Set Screw in 316 (A4-70 Marine Grade) Stainless steel hex set screw, manufactured in 316 (marine grade) stainless steel. As with all set-screws these are fully threaded. The head is stamped with the property and grade of stainless steel used. The stainless steel hex set screws are for general use in marine structural applications. The material designation of our stainless steel hex set screws is A4-70.

Size	Each	
	Product Code	Price
M3x10	SM-0079	£0.10
M4X16	SM-0151	£0.16
M4X20	SM-0152	£0.16
M4X25	SM-0028	£0.16
M5X16	SM-0153	£0.13
M5X25	SM-0020	£0.17
M5X40	SM-0154	£0.22
M6X20	SM-0070	£0.10
M6X30	SM-0001	£0.12
M6X60	SM-0071	£0.41
M6X80	SM-0069	£0.62
M6X100	SM-0155	£0.70
M8X40	SM-0002	£0.52
M8X60	SM-0045	£0.28
M8X100	SM-0046	£0.98
M10X50	SM-0012	£1.02
M10X80	SM-0081	£1.31
M10X100	SM-0047	£1.51
M12X60	SM-0035	£1.79
M12X100	SM-0082	£2.33

SELF-TAPPING SCREWS

Self-Tapping Screws Posi Countersunk - 316 (A4) Stainless



Our Marine-Grade A4 stainless steel countersunk (csk) posi-drive self-tapping screws provide maximum corrosion resistance for salt-water marine environments. The superior corrosion resistance of these A4 grade self-tappers make them a great choice for sailing, motor boating and other water-sports applications. Also popular with 4x4 and off-roading enthusiasts. The self-tapping threads make them ideal for fixing into fibre-glass, hard-wood, soft-wood and marine ply wood.

Size	Each	
	Product Code	Price
2.9x13	SM-0058	£0.04
2.9x19	SM-0060	£0.04
2.9X25	SM-0056	£0.04
3.5x13	SM-0174	£0.05
3.5x19	SM-0059	£0.06
3.5x25	SM-0245	£0.06
3.5x32	SM-0062	£0.08
4.2x19	SM-0042	£0.06
4.2x25	SM-0057	£0.10
4.2x38	SM-0061	£0.12
4.8x19	SM-0248	£0.10
4.8x25	SM-0044	£0.12
4.8x38	SM-0055	£0.16
5.5x38	SM-0304	£0.26
5.5x50	SM-0305	£0.42

SELF-TAPPING SCREWS

Self-tapping screws Posi-Pan 316 (A4) Stainless



Our Marine-Grade A4 stainless steel panhead posi-drive self-tapping screws provide maximum corrosion resistance for salt-water marine environments. The superior corrosion resistance of these A4 grade self-tappers make them a great choice for sailing, motor boating and other water-sports applications. Also popular with 4x4 and off-roading enthusiasts. The self-tapping threads make them ideal for fixing into fibre-glass, hard-wood, soft-wood and marine ply wood.

Size	Each	
	Product Code	Price
2.9x13	SM-0051	£0.04
2.9x19	SM-0053	£0.04
3.5x19	SM-0050	£0.06
4.2x19	SM-0041	£0.08
4.2x25	SM-0054	£0.10
4.8x19	SM-0049	£0.11
4.8x25	SM-0043	£0.13
4.8x38	SM-0052	£0.18

Self-Tapping Screws Slot-Countersunk (csk) 316 (A4) Stainless



Our Marine-Grade A4 stainless steel countersunk slot-drive self-tapping screws provide maximum corrosion resistance for salt-water marine environments. The superior corrosion resistance of these A4 grade self-tappers make them a great choice for sailing, motor boating and other water-sports applications. Also popular with 4x4 and off-roading enthusiasts. The self-tapping threads make them ideal for fixing into fibre-glass, hard-wood, soft-wood and marine ply wood.

Size	Each		Pack of 25		Pack of 100	
	Product Code	Price	Product Code	Price	Product Code	Price
2.9x19	SM-0438	£0.10	SM-0438-25	£1.90	SM-0438-100	£5.14
3.5x19	SM-0110	£0.08	SM-0110-25	£1.76	SM-0110-100	£4.86
3.5x32	SM-0111	£0.10	SM-0111-25	£1.90	SM-0111-100	£5.14
4.2x19	SM-0112	£0.11	SM-0112-25	£2.42	SM-0112-100	£5.92
4.2x25	SM-0113	£0.17	SM-0113-25	£3.28	SM-0113-100	£7.37
4.8x25	SM-0114	£0.19	SM-0114-25	£3.53	SM-0114-100	£7.69
4.8x38	SM-0115	£0.19	SM-0115-25	£3.56	SM-0115-100	£7.73
6.3x32	SM-0444	£0.23	SM-0444-25	£3.95	SM-0444-100	£8.00
6.3x38	SM-0445	£0.24	SM-0445-25	£4.00	SM-0445-100	£8.00
6.3x50	SM-0446	£0.40	SM-0446-25	£5.53	SM-0446-100	£13.20

SELF-TAPPING SCREWS

Self-Tapping Screws Slot-Pan 316 (A4) Stainless



Our Marine-Grade A4 stainless steel panhead slot-drive self-tapping screws provide maximum corrosion resistance for salt-water marine environments. The superior corrosion resistance of these A4 grade self-tappers make them a great choice for sailing, motor boating and other water-sports applications. Also popular with 4x4 and off-roading enthusiasts. The self-tapping threads make them ideal for fixing into fibre-glass, hard-wood, soft-wood and marine ply wood.

Size	Each	
	Product Code	Price
2.9x13	SM-0103	£0.08
3.5x19	SM-0104	£0.11
4.2x19	SM-0105	£0.10
4.2x25	SM-0106	£0.17
4.8x19	SM-0107	£0.08
4.8x25	SM-0108	£0.16
4.8x38	SM-0109	£0.23

WASHERS

Penny Washers Stainless Steel A4-Marine Grade (316) M3 M4 M5 M6 M8 M10 M12



Our Marine-Grade A4 stainless steel penny-washers provide maximum corrosion resistance for salt-water marine environments. The superior corrosion resistance of these A4 grade penny washers make them a great choice for sailing, motor boating and water-sports applications. Also popular with 4x4 and off-roading (mud-guard washers). The large diameter of these penny-washers (sometimes called repair washers) are preferred for attaching flexible or thin materials such as rubber, floor boards, outboard brackets etc. Penny washers are a great choice for through-deck fittings on sailing boats.

Size	Each		Pack of 25		Pack of 100	
	Product Code	Price	Product Code	Price	Product Code	Price
M3x9	SM-0073	£0.04	SM-0073-25	£0.70	SM-0073-100	£2.42
M4x20	SM-0027	£0.16	SM-0027-25	£3.14	SM-0027-100	£7.16
M5x25	SM-0024	£0.18	SM-0024-25	£3.34	SM-0024-100	£7.45
M6x25	SM-0005	£0.16	SM-0005-25	£3.14	SM-0005-100	£7.16
M8x25	SM-0006	£0.16	SM-0006-25	£3.14	SM-0006-100	£7.16
M10x25	SM-0063	£0.19	SM-0063-25	£3.56	SM-0063-100	£7.73
M10x30	SM-0011	£0.22	SM-0011-25	£3.73	SM-0011-100	£7.88
M12x37	SM-0037	£0.71	SM-0037-25	£7.60	SM-0037-100	£24.16

Spring washers Stainless Steel A4-Marine Grade (316) M3 M4 M5 M6 M8 M10 M12



The superior corrosion resistance of these A4 grade springwashers make them a great choice for sailing, motor boating and water-sports applications. Use these spring washers to help ensure that bolted joints do not loosen when subjected to vibrations.

Size	Each	
	Product Code	Price
M3	SM-0116	£0.01
M4	SM-0117	£0.01
M5	SM-0118	£0.02
M6	SM-0119	£0.02
M8	SM-0120	£0.06
M10	SM-0121	£0.18
M12	SM-0122	£0.11

WASHERS

Washers Stainless Steel A4-Marine Grade (316) M3 M4 M5 M6 M8 M10 M12



Our Marine-Grade A4 stainless steel washers provide maximum corrosion resistance for salt-water marine environments. The superior corrosion resistance of these A4 grade washers make them a great choice for sailing, motor boating and water-sports applications.

Size	Each		Pack of 25		Pack of 100	
	Product Code	Price	Product Code	Price	Product Code	Price
M3	SM-0078	£0.04	SM-0078-25	£0.66	SM-0078-100	£2.32
M4	SM-0066	£0.02	SM-0066-25	£0.40	SM-0066-100	£1.44
M5	SM-0025	£0.02	SM-0025-25	£0.44	SM-0025-100	£1.62
M6	SM-0014	£0.04	SM-0014-25	£0.61	SM-0014-100	£2.17
M8	SM-0015	£0.04	SM-0015-25	£1.02	SM-0015-100	£3.28
M10	SM-0016	£0.08	SM-0016-25	£1.72	SM-0016-100	£4.74
M12	SM-0067	£0.16	SM-0067-25	£2.99	SM-0067-100	£6.90

NUTS

Dome Nuts Stainless Steel A4-Marine Grade (316) M3 M4 M5 M6 M8 M10 M12



Our Marine-Grade A4 stainless steel dome nuts provide maximum corrosion resistance for salt-water marine environments. The superior corrosion resistance of these A4 grade dome nuts make them a great choice for marine applications. For a smooth, safe and attractive finish to bolted connections.

Size	Each	
	Product Code	Price
M3	SM-0202	£0.11
M4	SM-0203	£0.13
M5	SM-0204	£0.08
M6	SM-0205	£0.08
M8	SM-0206	£0.41
M10	SM-0246	£0.82
M12	SM-0247	£1.30

Nuts Stainless Steel A4-Marine Grade (316) M3 M4 M5 M6 M8 M10 M12



Our Marine-Grade A4 stainless steel metric nuts provide maximum corrosion resistance for salt-water marine environments. The superior corrosion resistance of these A4 grade nuts make them a great choice for sailing, motor boating and other water-sports applications. Also popular with 4x4 and off-roading enthusiasts.

Size	Each	
	Product Code	Price
M3	SM-0077	£0.06
M4	SM-0123	£0.06
M5	SM-0022	£0.04
M6	SM-0003	£0.07
M8	SM-0004	£0.14
M10	SM-0010	£0.31
M12	SM-0065	£0.46

NUTS

Nyloc Nuts Stainless Steel A4-Marine Grade (316) M3 M4 M5 M6 M8 M10 M12



Our Marine-Grade A4 stainless steel Nyloc (nylon insert nuts) provide maximum corrosion resistance for salt-water marine environments. The superior corrosion resistance of these A4 grade Nyloc nuts make them a great choice for sailing, motor boating and other water-sports applications. Also popular with 4x4 and off-roading enthusiasts. Use these where anti-vibration or resistance to loosening is required.

Size	Each	
	Product Code	Price
M3	SM-0072	£0.06
M4	SM-0026	£0.06
M5	SM-0023	£0.05
M6	SM-0009	£0.07
M8	SM-0013	£0.16
M10	SM-0017	£0.48
M12	SM-0036	£0.52

COTTER PINS, SPLIT PINS & CLEVIS PINS

Cotter Pins



Our Marine-Grade A4 stainless steel cotter pins provide maximum corrosion resistance for salt-water marine environments. The superior corrosion resistance of these A4 grade (316) stainless cotterpins make them a great choice for sailing, motor boating and other water-sports applications. Use these cotter pins for securing items such as turnbuckles / rigging screws, pulley blocks etc.

Size	Each	
	Product Code	Price
4x14	SM-0306	£0.46
4x20	SM-0307	£0.58
5x15	SM-0308	£0.64
5x18	SM-0309	£0.64
5x21	SM-0310	£0.70
6x15	SM-0311	£0.76
6x20	SM-0312	£0.91
6x24	SM-0313	£0.97
6x29	SM-0345	£1.13
6x34	SM-0315	£1.18
6x44	SM-0317	£1.19
6x54	SM-0319	£1.36
6x64	SM-0320	£1.62
8x21	SM-0321	£1.30
8x24	SM-0322	£1.36
8x27	SM-0323	£1.31
8x32	SM-0324	£1.57
8x34	SM-0325	£1.60
8x44	SM-0346	£1.81
8x54	SM-0326	£1.97
8x64	SM-0327	£2.22
8x74	SM-0328	£2.39
8x84	SM-0329	£2.50

COTTER PINS, SPLIT PINS & CLEVIS PINS

Linch Pins



The superior corrosion resistance of these A4 grade linch pins (sometimes known as ring catches) make them a great choice for sailing, motor boating and other water-sports applications. Linch pins are commonly used for items that need to be quickly released, but have the security of the sprung security loop.

Size	Each	
	Product Code	Price
Size 4.5	SM-0351	£3.85
Size 6	SM-0352	£3.83
Size 7.9	SM-0353	£4.81

Quick Release Cotter Pin, Stainless Steel Release Pin

Quick release cotter pin, manufactured from 316 (marine-grade) stainless steel.



- 316 (marine-grade) stainless
- Sprung ball-end

Size	Each		Pack of 10	
	Product Code	Price	Product Code	Price
5x28mm	SM-0434	£3.28	SM-0434-10	£14.41
6x35mm	SM-0435	£3.83	SM-0435-10	£19.00
8x33mm	SM-0436	£4.92	SM-0436-10	£25.97
8x53mm	SM-0437	£5.04	SM-0437-10	£28.40

COTTER PINS, SPLIT PINS & CLEVIS PINS

R-Clips



R-Clips for securing clevis pins, cotter pins and other pivot pins, typically used to secure canopy frames and other deck-mounted items on your boat that need easy removal. Manufactured from marine grade A4 stainless steel as you would expect. Beta pins have the advantages over split-pins that they are fully re-usable and easy to fit and remove time and time again,

Size	Each	
	Product Code	Price
2mm	SM-0347	£1.19
3mm	SM-0348	£1.84
4mm	SM-0349	£2.74
5mm	SM-0350	£4.07

Ring Pins



Ringpins - for securing clevis pins, cotter pins and other pivot pins, typically used to secure clevis pins to secure the ends of turnbuckles, sheet blocks and other deck-mounted items on your boat. Manufactured from marine grade A4 stainless steel as you would expect. Ring pins have the advantages over split-pins that they are fully re-usable and their rounded shape minimises any chances of damage to sails or the possibility of catching on ropes such as fore-sail sheets.

Size	Each	
	Product Code	Price
1x10mm	SM-0354	£0.14
1.2x15mm	SM-0355	£0.22
1.5x20mm	SM-0356	£0.22
1.8x25mm	SM-0357	£0.36

COTTER PINS, SPLIT PINS & CLEVIS PINS

Split Pins / Split Cotter Pins



Stainless Steel Split Pin (Split Cotter Pin) 316 Marine Grade Stainless steel split pin, some times known as split cotter pin(s) for boating and sailing and general marine use. Stainless steel split pins are often used for securing threads such as turnbuckles or rigging screws and trailer wheel bearing nuts. Use our split pin size selection chart (in accordance with the standard DIN 94) to make sure your choose the right split pin for the job. Split pins are sometimes know as split cotter pins, and have a number of uses in and around the boat including the securing of threaded joints such as turnbuckles or rigging screws, and securing pivot pins such as cotter pins used in sailing pulley blocks. The stainless steel split pin is pushed through the securing hole (after the joining has been set or tightened to the right level) and then the legs of the split pin are bent outwards to keep it in place.

Size	Each		Pack of 25		Pack of 100	
	Product Code	Price	Product Code	Price	Product Code	Price
1.6x16	SM-0262	£0.04	SM-0262-25	£0.76	SM-0262-100	£2.58
1.6x25	SM-0263	£0.05	SM-0263-25	£1.19	SM-0263-100	£3.66
1.6x40	SM-0264	£0.08	SM-0264-25	£1.75	SM-0264-100	£4.84
2.0x16	SM-0265	£0.04	SM-0265-25	£0.89	SM-0265-100	£2.98
2.0x20	SM-0266	£0.05	SM-0266-25	£1.07	SM-0266-100	£3.41
2.0x25	SM-0267	£0.05	SM-0267-25	£1.19	SM-0267-100	£3.66
2.0x32	SM-0268	£0.06	SM-0268-25	£1.46	SM-0268-100	£4.20
2.0x40	SM-0269	£0.08	SM-0269-25	£1.73	SM-0269-100	£4.79
2.5x20	SM-0270	£0.07	SM-0270-25	£1.62	SM-0270-100	£4.57
2.5x25	SM-0271	£0.08	SM-0271-25	£1.75	SM-0271-100	£4.84
2.5x32	SM-0272	£0.10	SM-0272-25	£2.04	SM-0272-100	£5.38
2.5x40	SM-0273	£0.12	SM-0273-25	£2.48	SM-0273-100	£5.98
3.2x20	SM-0274	£0.10	SM-0274-25	£2.05	SM-0274-100	£5.38
3.2x25	SM-0275	£0.11	SM-0275-25	£2.33	SM-0275-100	£5.80
3.2x32	SM-0276	£0.13	SM-0276-25	£2.63	SM-0276-100	£6.26
3.2x40	SM-0277	£0.16	SM-0277-25	£3.04	SM-0277-100	£6.98
3.2x50	SM-0278	£0.18	SM-0278-25	£3.35	SM-0278-100	£7.48
3.2x63	SM-0279	£0.24	SM-0279-25	£4.01	SM-0279-100	£8.02
4.0x25	SM-0280	£0.20	SM-0280-25	£3.60	SM-0280-100	£7.76
4.0x40	SM-0281	£0.28	SM-0281-25	£4.37	SM-0281-100	£9.02
4.0x63	SM-0282	£0.37	SM-0282-25	£5.41	SM-0282-100	£12.68
5.0x25	SM-0295	£0.32	SM-0295-25	£4.99	SM-0295-100	£11.02
5.0x40	SM-0296	£0.46	SM-0296-25	£5.98	SM-0296-100	£15.82
5.0X50	SM-0297	£0.56	SM-0297-25	£6.72	SM-0297-100	£19.18

COTTER PINS, SPLIT PINS & CLEVIS PINS

Size	Each		Pack of 25		Pack of 100	
	Product Code	Price	Product Code	Price	Product Code	Price
5.0x63	SM-0298	£0.68	SM-0298-25	£7.43	SM-0298-100	£23.04
6.3x32	SM-0299	£0.54	SM-0299-25	£18.52	SM-0299-100	£3.84
6.3x40	SM-0300	£0.70	SM-0300-25	£23.65	SM-0300-100	£4.58
6.0x50	SM-0301	£0.83	SM-0301-25	£27.64	SM-0301-100	£5.14
6.0x63	SM-0302	£0.91	SM-0302-25	£30.06	SM-0302-100	£5.44

LIFTING EYES

Lifting Eye Bolts Stainless Steel A4 Marine-Grade (316)



Our Marine-Grade A4 stainless steel lifting eye bolts provide maximum corrosion resistance for salt-water marine environments. The superior corrosion resistance of these A4 grade lifting eye bolts make them a great choice for sailing, motor boating and other water-sports applications. Lifting eyes are commonly used as attachment points, cable attachments, rigging or rigging attachments or purely as lifting points these have a variety of uses.

Size	Each	
	Product Code	Price
M6	SM-0223	£1.76
M8	SM-0224	£2.99
M10	SM-0225	£4.42
M12	SM-0239	£5.80

Lifting Eye Nuts Stainless Steel A4 Marine-Grade (316)



Our Marine-Grade A4 stainless steel lifting eye nuts provide maximum corrosion resistance for salt-water marine environments. The superior corrosion resistance of these A4 grade lifting eye nuts make them a great choice for sailing, motor boating and other water-sports applications. Lifting eyes are commonly used as attachment points or lifting points, cable attachments, rigging or rigging attachments or purely as lifting points these have a variety of uses. Use these in conjunction with our stainless A4 set screws of length to suit your application.

Size	Each	
	Product Code	Price
M6	SM-0220	£1.74
M8	SM-0221	£2.52
M10	SM-0222	£4.18
M12	SM-0238	£5.24

ELECTRICAL FITTINGS

LIGHTING

Double LED Lighting Unit 12V Single LED In Plastic Casing

PRODUCT CODE: SM-0249

PRICE £7.19



Double LED lighting unit inside a plastic casing. The lighting level from these units is well suited to boat interior spaces and would be ideal for illuminating chart areas, instrument areas or cockpit spaces without fear of using up too much precious battery power. These have a very low power consumption at less than one tenth of a Watt so they will draw very little current from your marine batteries. These are supplied with wires ready to be connected to a 12V system, so ready to go. No additional controllers are required.

High-Power Waterproof LED Light With Stainless Steel Cover 12V 16 LED

PRODUCT CODE: SM-0336

PRICE £18.36



High-Power waterproof LED light unit in sealed plastic housing with polished stainless cover. The outside diameter of the unit is just over 94mm. This unit is waterproof to IP66, and will stand up well to the marine environment. The lighting level of 207 Lumen from these units is ideal for cabin illumination where a good level of visibility is needed. The power consumption at 2.5 W means that they will draw very little current from your marine batteries.

LED Light 6-LED Linear. Surface Mounted. Waterproof To IP67

PRODUCT CODE: SM-0235

PRICE £8.11



Surface mounted LED lighting unit. 6 LED lights inside a hard plastic casing. Overall length is 140mm. This unit is waterproof to IP67, and though not advised for use under-water will stand up well to the marine environment. The lighting level from these units is well suited to boat interior spaces, or illuminating cockpit spaces for example mounted up inside exterior cockpit locker spaces.

Marine Navigation Lights For Boats Up To 12m



Navigation lights for boats / vessels up to 12m in length. Mast head navigation light, stern navigation light, starboard, port, combination port / starboard options available. These come complete with a festoon bulb (12V, 10W). Each items comes complete with a certificate of conformance for International Rules Approval from tests.

Size	Each	
	Product Code	Price
Stern White	SM-0257	£10.39
Mast Head White	SM-0261	£11.03
Red/Green Combination	SM-0258	£9.77
Port (Red)	SM-0260	£11.08
Starboard (Green)	SM-0259	£11.08

WaterProof Marine LED Flush Mount Light With Stainless Steel Cover 12V 3 LED Boat Sailing / Cabin IP66

PRODUCT CODE: SM-0250 PRICE £8.34



3 LED circular lighting unit in sealed plastic housing with polished stainless cover. The outside diameter of the unit is just over 70mm. This unit is waterproof to IP66, and will stand up well to the marine environment. The lighting level from these units is ideal for cabin illumination. The power consumption at 0.22 W means that they will draw very little current from your marine batteries.

SWITCHES & PANELS

5-Gang Electrical Marine Switch Panel With 12V Cigarette Lighter Socket

PRODUCT CODE: SM-0339 PRICE £27.72



5-Gang electrical switch panel with 12V cigarette lighter socket. Made from tough ABS material with a rubber gasket and waterproof covers for the switches and cigarette lighter socket, this unit is ideal for many marine applications. The switch panel comes complete with a variety of labels to suite typical marine equipment, covering the vast majority of electrical items you would find on a boat. Behind the switch panel are three protected fuse canisters for flat-blade fuses of 15A each. A wiring diagram is included in the packaging.

6-Gang Electrical Marine Switch Panel

PRODUCT CODE: SM-0284 PRICE £24.24



6-Gang electrical switch panel. This unit has an anodized aluminium plate and 6 fused switches labelled as Anchor Light, Running Light, Cabin Light, Bilge Pump, Aux1 and Aux2. It also comes with an alternative set of label stickers covering most electrical items you could think of on a boat, which can replace the default labels. The unit is supplied with 5A fuses, which can be replaced by pushing the sprung-loaded tab with each fuse compartment. This unit is not water-proof so is for interior applications.

Heavy-Duty Marine Electrical Master Battery Switch, 300A 12V

PRODUCT CODE: SM-0338 PRICE £21.24



Heavy-Duty Marine electrical master battery switch with 300A current capacity. Ideal for power-boats and sailing boats. Isolate your marine battery system, cutting off all possibility of battery-induced galvanic corrosion to help prolong the life of propellers, prop-shafts and other metallic fittings which can otherwise suffer from the effects of marine electrolysis if micro-currents are allowed to flow. Including a master-switch in your marine battery system also give peace of mind, knowing that if there is an electrical malfunction you can isolate everything while you investigate the source of the problem.

Marine Electrical Kill Switch. Safety Cut Out System. Emergency Engine Stop

PRODUCT CODE: SM-0236 PRICE £7.60



Marine electrical engine kill-switch. Ideal for RIB's, speed boats, jet-ski's but also suited to quad-bikes motorised buggies or any other moving vehicle which needs to be brought under control if the rider falls off. One end of the kill-cord is attached to the switch (which is wired into the ignition system) and one is attached to the driver's or rider's wrist. There are two choices of terminals which can be used, one pair which is open-circuit when activated and one pair which is closed-circuit when activated.

SWITCHES & PANELS

Marine Electrical Master Battery Switch, 100A 12V

PRODUCT CODE: SM-0337 PRICE £12.84



Marine electrical master battery switch. Ideal for RIB's, speed boats, jet-ski's, power-boats and sailing boats. Isolate your marine battery system, cutting off all possibility of battery-induced galvanic corrosion to help prolong the life of propellers, prop-shafts and other metallic fittings which can otherwise suffer from the effects of marine electrolysis if micro-currents are allowed to flow. Including a master-switch in your marine battery system also give peace of mind, knowing that if there is an electrical malfunction you can isolate everything while you investigate the source of the problem. This unit comes with a removable key. Also included is a waterproof cover so that when you leave the boat (and remove the key) you can cover the switch the a waterproof rubber cap.

Water Protected Bilge Pump Switch With Safety Alarm

PRODUCT CODE: SM-0389 PRICE £19.68



Water Protected Bilge Pump Switch With Safety Alarm. Water-Protected Bilge Pump Switch. It has an added safety alarm feature which allows the bilge pump switch to operate with two float switches for added safety (see further details). The water-protection of this bilge pump switch panel makes it suitable for external mounting, care must be taken though to seal the interface between the switch panel and its mounting bulkhead. The bilge pump switch comes complete with wiring diagram, fuse and fixing screws.

CABLE OUTLETS & CONNECTORS

Boat Waterproof Electrical Connector, 5A 2-Pole & 3-Pole



Boat Waterproof Electrical Connector, 5A 2-Pole & 3-Pole. Made from brass and chrome plated. Complete with waterproof blanking plug for when it is not being used. Ideal for removeable electrical equipment such as autohelms or VHF radios.

- Brass, chrome plated construction
- 5A current
- 2-pole & 3-pole options

Size	Each	
	Product Code	Price
5A 2-Pole	SM-0489	£19.84
5A 3-Pole	SM-0490	£20.22

Waterproof Electrical Connector In Chrome Plated Brass



Waterproof electrical connector. These are made from brass and chrome plated. Ideal for providing a sealed outlets for electrical cables for items such as navigation equipment, lights, depths sounders, fish finders, auto-helms etc which you might want to disconnect easily for maintenance or to keep in inside the cabin or take home for security. There are two versions, a 2-pole connector and a 3-pole connector depending on your requirements. The sealing grommet for the cable will accommodate cables from 3mm to 6mm diameter.

Size	Each	
	Product Code	Price
2 Pole	SM-0285	£14.04
3 Pole	SM-0286	£15.48

CABLE OUTLETS & CONNECTORS

Waterproof Through-Deck Electrical Cable Outlet / Gland In Chrome Plated Brass



Waterproof flanged through-deck cable outlet fittings / cable glands. These are made from brass and chrome plated. Ideal for providing a sealed outlet for electrical cables for items such as navigation equipment, lights, depths sounders, fish finders, autohelms etc. Each size of fitting comes with a tapered rubber grommet which is sealed against the cable and fitting as it is compressed with the fitting nut. The fitting is secured to the deck or using the 3 countersunk screw holes provided (sealant should be used between the flange and the deck).

Size	Each	
	Product Code	Price
Cable diameter up to 10mm	SM-0253	£7.30
Cable diameter up to 8mm	SM-0252	£5.96
Cable diameter up to 6mm	SM-0251	£5.96

DECK FITTINGS

STAINLESS STEEL CLEATS

Boat Cleats (Fixed From Underneath)



Stainless steel cleat, manufactured in 316 marine-grade stainless steel, with fixing access from underneath. These deck cleats are attached from underneath leaving an invisible bolting arrangement. Use these cleats on deck or dock-side for mooring. The large clearance to the deck gives plenty of space for larger diameter mooring ropes. A stainless steel cleat of this type will also look beautiful where ever the location.

Size	Each	
	Product Code	Price
150mm	SM-0362	£17.88
200mm	SM-0363	£23.16
250mm	SM-0364	£35.04

Boat Deck Bollard, Stainless Steel 316, Polished Finish

PRODUCT CODE: SM-0431 PRICE £34.90



Boat deck bollard in 316 stainless steel. This marine-grade stainless steel bollard with polished finish. For mooring rope or anchor attachment.

- 316 (marine-grade) stainless
- Solid cast steel construction
- Polished finish

Flag Pole Cleats



Our Marine-Grade A4 (316) stainless steel flag pole cleats provide maximum corrosion resistance for salt-water marine environments. The superior corrosion resistance of these A4 grade cleats make them a great choice for sailing, motor boating and other water-sports applications. These cleats are of a size for attaching smaller ropes for flags etc. These come with a polished finish and look great.

Size	Each	
	Product Code	Price
68mm	SM-0254	£2.18
114mm	SM-0255	£3.52
150mm	SM-0256	£5.04

STAINLESS STEEL CLEATS

Folding Boat Deck Cleat, Stainless Steel



Folding boat deck cleat, manufactured from 316 stainless steel. These have a polished finish and include fixing studs with washers and nuts. These folding boat deck cleats have a sprung action to keep them in place when closed or open.

- Stainless steel construction
- Sprung folding action
- Studs and fixings included

Size	Each	
	Product Code	Price
155mm	SM-0441	£49.01
200mm	SM-0442	£55.08

Hollow-Base Boat Cleats (4 Fixings)



Our Marine-Grade A4 stainless steel deck cleats provide maximum corrosion resistance for salt-water marine environments. The superior corrosion resistance of these A4 grade cleats make them a great choice for sailing, motor boating and other water-sports applications. Cleats are used for attaching ropes and warps for mooring up, using a figure of eight method. These come with a polished finish and look great. Our range of sizes cover from dinghy's to yachts to motor cruisers.

Size	Each	
	Product Code	Price
100mm	SM-0171	£7.06
125mm	SM-0172	£7.44
150mm	SM-0173	£8.70
200mm	SM-0177	£14.04
250mm	SM-0198	£21.84

STAINLESS STEEL CLEATS

Low Flat Boat Cleats (2 Fixings)



Our Marine-Grade A4 stainless steel deck cleats provide maximum corrosion resistance for salt-water marine environments. The superior corrosion resistance of these A4 grade cleats make them a great choice for sailing, motor boating and other water-sports applications. Cleats are used for attaching ropes and warps for mooring up, using a figure of eight method. These come with a polished finish and look great attached to boat decking. Our range of sizes cover from dinghy's to yachts to motor cruisers.

Size	Each	
	Product Code	Price
100mm	SM-0210	£7.00
125mm	SM-0211	£7.91
150mm	SM-0212	£9.32
200mm	SM-0213	£14.88

Low Flat Boat Cleats (4 Fixings)



Our Marine-Grade A4 stainless steel deck cleats provide maximum corrosion resistance for salt-water marine environments. The superior corrosion resistance of these A4 grade cleats make them a great choice for sailing, motor boating and other water-sports applications. Cleats are used for attaching ropes and warps for mooring up, using a figure of eight method. These come with a polished finish and look great attached to boat decking. Our range of sizes cover from dinghy's to yachts to motor cruisers.

Size	Each	
	Product Code	Price
100mm	SM-0241	£7.30
125mm	SM-0242	£7.86
150mm	SM-0243	£12.60
200mm	SM-0244	£18.84

FAIRLEADS

Fairleads



Our Marine-Grade A4 stainless steel fairleads provide maximum corrosion resistance for salt-water marine environments. The superior corrosion resistance of these fairleads make them a great choice for sailing and motor boating applications. Fairleads are used to provide a guide way for mooring ropes and warps to keep things in shape and prevent damage to your boat's decking / gunwalls. These come with a polished finish and look great. These come in two sizes and the pricing is for individual items (as these are non-handed)

Size	Each	
	Product Code	Price
125mm Single Item	SM-0343	£8.69
155mm Single Item	SM-0344	£10.32

Fairleads (Left & Right Hand Pair)



Our Marine-Grade A4 stainless steel fairleads provide maximum corrosion resistance for salt-water marine environments. The superior corrosion resistance of these fairleads make them a great choice for sailing and motor boating applications. Fairleads are used to provide a guide way for mooring ropes and warps to keep things in shape and prevent damage to your boat's decking / gunwalls. These come with a polished finish and look great. These come in two sizes and the pricing is for a left and right-hand pair.

Size	Each	
	Product Code	Price
115mm L+R Pair	SM-0229	£11.99
150mm L+R Pair	SM-0230	£22.92

BRACKETS, MOUNTS & HOLDERS

Flush Fitting Fishing Rod Holder

PRODUCT CODE: SM-0234 PRICE £15.00



Our Marine-Grade A4 stainless steel flush fishing rod holders provide maximum corrosion resistance for salt-water marine environments. These A4 stainless fishing rod holders have a solid quality feel. They come complete with a rubber gasket to seal against the cockpit surface. The rubber cap prevents water ingress when in use. The inner diameter to accept the base of the rod is just over 40mm.

Oarlock / Rowlock Socket, In Stainless Steel

PRODUCT CODE: SM-0483 PRICE £21.68



Oarlock / Rowlock Socket, In Stainless Steel, 12.6mm or half inch diameter thru-hole. Sold as a pair.

- 316 Stainless steel construction
- 12.6mm thru-hole
- Polished finish

Oarlock / Rowlock, Dinghy Oar Socket, In Stainless Steel (Pair)

PRODUCT CODE: SM-0482 PRICE £28.75



Oarlock / Rowlock, Dinghy Oar Socket, In Stainless Steel, 12.5mm or half inch diameter spigot, with hole for safety line to prevent accidental loss. Sold as a pair.

- 316 Stainless steel construction
- Polished finish
- Safety line attachment hole

Stainless Steel Deck Hinge For Spray Hoods & Canopies etc

PRODUCT CODE: SM-0443 PRICE £6.30



Stainless steel deck hinge, for spray hoods and canopies. This secures to the deck and acts as a hinge point for frames for boat hoods, boat canopies etc.

- 316 Marine grade stainless
- 90-degree angle
- Polished finish
- Fixing size M5 or 4.8mm for self-tappers

BRACKETS, MOUNTS & HOLDERS

Stainless Steel Strap End / Staple / Securing Bracket



Stainless steel strap end / staple in 316 (marine grade) stainless steel. For awning straps / canopy straps / bimini tensioning straps etc.

- 316 (marine-grade) stainless
- Polished finish
- Fixing size, M4 or 4.2mm for self-tappers

Size	Each	
	Product Code	Price
26mm	SM-0432	£5.36
36mm	SM-0433	£5.36

Water-Ski Mount Hook

PRODUCT CODE: SM-0417 PRICE £27.96



Water Ski Mount Hook, In 316 Stainless Steel: Large Size Water ski mount hook, in 316 marine grade stainless steel. Formed from a single piece of stainless steel, and with a polished finish this mounting hook is ideal for attaching water-ski ropes to the back of your speedboat. The water-skiing rope mounting bracket includes large diameter washers and fixings nuts. Its construction is very sturdy, being manufactured from a single piece of A4 316 stainless steel. The hook shape is designed for ease of use while providing a secure mounting for the ski rope.

Water-Ski Rope Hook

PRODUCT CODE: SM-0416 PRICE £23.88



Water Skiing Rope Hook, In 316 Stainless Steel Water skiing rope hook, in 316 marine grade stainless steel. Formed from a single piece of stainless steel, and with a polished finish this mounting hook is ideal for attaching water-ski ropes to the back of your speedboat. The water-skiing rope mounting bracket includes large diameter washers and fixings nuts. Its construction is very sturdy, being manufactured from a single piece of A4 316 stainless steel. The hook shape is designed for ease of use while providing a secure mounting for the ski rope.

DECK FITTINGS - GENERAL

U-bolt With Counter-Plates



Our Marine-Grade A4 stainless steel U-bolts provide maximum corrosion resistance for salt-water marine environments. The superior corrosion resistance of these A4 grade U-bolts make them a great choice for sailing, motor boating and other water-sports applications. U-bolts are commonly used as attachment points for rigging shrouds or for attachment points for winching onto your trailer.

Size	Each	
	Product Code	Price
M8	SM-0231	£7.24
M10	SM-0232	£7.56

Wire Eye Straps



Our Marine-Grade A4 stainless steel wire-straps provide maximum corrosion resistance for salt-water marine environments. The superior corrosion resistance of these A4 grade wire eye straps make them a great choice for sailing, motor boating and other water-sports applications. Wire straps are commonly used as attachment points for canvas hoods, canopies, fender ropes and other low-load attachments in fibre-glass and marine ply.

Size	Each	
	Product Code	Price
4mm	SM-0303	£0.65
5mm	SM-0134	£0.67
6mm	SM-0135	£1.00
8mm	SM-0136	£1.33
10mm	SM-0137	£2.56

CABIN LATCHES, FITTINGS & HINGES

HINGES

Stainless Steel A2 Oval Hinge, 51x35mm, Marine & Sailing, Door, Locker, Cabinet

PRODUCT CODE: SM-0209

PRICE £4.09



Our stainless steel oval hinges provide a base level of corrosion resistance for marine environments. These hinges are suitable for interior and exterior applications, but if used in a marine exterior application may stain with time. These A2 stainless hinges would be ideal for cabin doors, lockers, tables and cabinets. These come in a choice of sizes. We also have other styles available from our store.

Stainless Steel A2 Oval Hinge, 67x48mm, Marine & Sailing, Door, Locker, Cabinet

PRODUCT CODE: SM-0208

PRICE £7.84



Our stainless steel oval hinges provide a base level of corrosion resistance for marine environments. These hinges are suitable for interior and exterior applications but if used in exterior marine applications may stain in time. These A2 stainless hinges would be ideal for cabin doors, lockers, tables and cabinets. These come in a choice of sizes. We also have other styles available from our store.

Stainless Steel A4 (316) Butt Hinge, Marine & Sailing, Door, Locker, Cabinet 38x38mm

PRODUCT CODE: SM-0163

PRICE £5.45



Our Marine-Grade A4 stainless steel butt hinges provide maximum corrosion resistance for salt-water marine environments. These hinges have a lovely polished finish making them ideal for both interior and exterior marine applications. These A4 stainless hinges are have a solid quality feel and would be ideal for cabin doors, lockers, tables and cabinets. The corrosion resistance also makes them suitable for exterior cockpit lockers or exterior tables.

Stainless Steel A4 (316) Butt Hinge, Marine & Sailing, Door, Locker, Cabinet 50x50mm

PRODUCT CODE: SM-0164

PRICE £6.50



Our Marine-Grade A4 stainless steel butt hinges provide maximum corrosion resistance for salt-water marine environments. These hinges have a lovely polished finish making them ideal for both interior and exterior marine applications. These A4 stainless hinges are have a solid quality feel and would be ideal for cabin doors, lockers, tables and cabinets. The corrosion resistance also makes them suitable for exterior cockpit lockers or exterior tables.

HINGES

Stainless Steel A4 (316) Cabin Lock / Latch / Locking Hinge 114mm

PRODUCT CODE: SM-0201

PRICE £7.84



Our Marine-Grade A4 stainless cabin latches provide maximum corrosion resistance for salt-water marine environments. These actually have two uses, the first is as a latch for latching or locking doors or lockers. The second use is as a hinge for items that want to be easily removable (eg table extensions, temporary or movable chart tables). As you can see from the pictures these come with a large diameter pin for extra security and to withstand high hinge loadings. These latches have a lovely polished finish and a sturdy construction.

Stainless Steel A4 (316) Door Hinge, Marine & Sailing, Door, Locker, Cabinet 100x38mm

PRODUCT CODE: SM-0160

PRICE £6.89



Our Marine-Grade A4 stainless steel door hinges provide maximum corrosion resistance for salt-water marine environments. These hinges have a lovely polished finish making them ideal for both interior and exterior marine applications. These A4 stainless hinges are have a solid quality feel and would be ideal for cabin doors, lockers, tables and cabinets. The corrosion resistance also makes them suitable for exterior cockpit lockers or exterior tables. These come in a choice of sizes.

Stainless Steel A4 (316) Door Hinge, Marine & Sailing, Door, Locker, Cabinet 56x38mm

PRODUCT CODE: SM-0161

PRICE £5.92



Our Marine-Grade A4 stainless steel door hinges provide maximum corrosion resistance for salt-water marine environments. These hinges have a lovely polished finish making them ideal for both interior and exterior marine applications. These A4 stainless hinges are have a solid quality feel and would be ideal for cabin doors, lockers, tables and cabinets. The corrosion resistance also makes them suitable for exterior cockpit lockers or exterior tables. These come in a choice of sizes.

Stainless Steel A4 (316) Door Hinge, Marine & Sailing, Door, Locker, Cabinet 76X38mm

PRODUCT CODE: SM-0159

PRICE £6.12



Our Marine-Grade A4 stainless steel door hinges provide maximum corrosion resistance for salt-water marine environments. These hinges have a lovely polished finish making them ideal for both interior and exterior marine applications. These A4 stainless hinges are have a solid quality feel and would be ideal for cabin doors, lockers, tables and cabinets. The corrosion resistance also makes them suitable for exterior cockpit lockers or exterior tables. These come in a choice of sizes.

HINGES

**Stainless Steel A4 (316) Door Hinge, Marine & Sailing, Door,
Locker, Cabinet 76x38mm**

PRODUCT CODE: SM-0162

PRICE £6.68



Our Marine-Grade A4 stainless steel door hinges provide maximum corrosion resistance for salt-water marine environments. These hinges have a lovely polished finish making them ideal for both interior and exterior marine applications. These A4 stainless hinges are have a solid quality feel and would be ideal for cabin doors, lockers, tables and cabinets. The corrosion resistance also makes them suitable for exterior cockpit lockers or exterior tables. These come in a choice of sizes.

**Stainless Steel A4 (316) Offset Hinge, Marine & Sailing, Door,
Locker, Cabinet 56x38mm**

PRODUCT CODE: SM-0168

PRICE £7.20



Our Marine-Grade A4 stainless steel offset hinges provide maximum corrosion resistance for salt-water marine environments. These hinges have a lovely polished finish making them ideal for both interior and exterior marine applications. These A4 stainless hinges are have a solid quality feel and would be ideal for cabin doors, lockers, tables and cabinets. The corrosion resistance also makes them suitable for exterior cockpit lockers or exterior tables.

**Stainless Steel A4 (316) Offset Hinge, Marine & Sailing, Door,
Locker, Cabinet 70x38mm**

PRODUCT CODE: SM-0169

PRICE £7.97



Our Marine-Grade A4 stainless steel offset hinges provide maximum corrosion resistance for salt-water marine environments. These hinges have a lovely polished finish making them ideal for both interior and exterior marine applications. These A4 stainless hinges are have a solid quality feel and would be ideal for cabin doors, lockers, tables and cabinets. The corrosion resistance also makes them suitable for exterior cockpit lockers or exterior tables.

**Stainless Steel A4 (316) Strap Hinge, Marine & Sailing, Door,
Locker, Cabinet 100x26mm**

PRODUCT CODE: SM-0166

PRICE £6.06



Our Marine-Grade A4 stainless steel strap hinges provide maximum corrosion resistance for salt-water marine environments. These hinges have a lovely polished finish making them ideal for both interior and exterior marine applications. These A4 stainless hinges are have a solid quality feel and would be ideal for cabin doors, lockers, tables and cabinets. The corrosion resistance also makes them suitable for exterior cockpit lockers or exterior tables.

HINGES

Stainless Steel A4 (316) Strap Hinge, Marine & Sailing, Door, Locker, Cabinet 160x27mm

PRODUCT CODE: SM-0167

PRICE £7.78



Our Marine-Grade A4 stainless steel strap hinges provide maximum corrosion resistance for salt-water marine environments. These hinges have a lovely polished finish making them ideal for both interior and exterior marine applications. These A4 stainless hinges are have a solid quality feel and would be ideal for cabin doors, lockers, tables and cabinets. The corrosion resistance also makes them suitable for exterior cockpit lockers or exterior tables.

Stainless Steel Hinge, 30x40mm Butt Hinge

PRODUCT CODE: SM-0453

PRICE £3.05



Stainless steel butt hinge. A hinge for general use for doors, lockers, hatches, boxes and many other uses. This is manufactured from A2 (304) stainless steel.

- Fixing size M4, or 4.2mm for self-tappers
-

GENERAL DOOR / LOCKER FURNITURE

Graveley Catch, Hinged Door Catch Plate

PRODUCT CODE: SM-0448 PRICE £7.68



Graveley catch plate, often used to secure hinged doors. Made from 316 stainless steel.

- Fixing size M4 or 3.5mm for self-tappers

Hatch Lifting Ring / Floor Lifting Ring, Round, Stainless Steel

PRODUCT CODE: SM-0447 PRICE £6.38



Round stainless steel lifting ring for hatches and floor boards. Marine grade stainless steel

- Flush fitting
- Polished finish
- Fixing size M4 or 4.2mm for self-tappers

Hatch Spring Holder / Door Holder, Stainless Steel



Hatch spring holder in stainless steel. When straight this hatch holder acts like a rigid rod, and will very securely hold the hatch or door open. When you push it aside to bend it, the hatch can easily be closed.

- Stainless steel construction

Size	Each	
	Product Code	Price
235mm	SM-0439	£7.54
295mm	SM-0440	£9.35

Stainless Steel A4 (316) Cabin Hook, Marine & Sailing, Door, Cabinet Latch

PRODUCT CODE: SM-0199 PRICE £7.25



These cabin hooks in A4 stainless (316) have a lovely polished finish. They are mainly used for propping open doors, windows, shutters or lockers. These A4 stainless cabin hooks have a solid quality feel and would be ideal for cabin doors, lockers, shutters and cabinets. The corrosion resistance also makes them suitable for exterior doors or exterior use.

GENERAL DOOR / LOCKER FURNITURE

Stainless Steel A4 (316) Cabin Lock / Latch / Locking Hinge 114mm

PRODUCT CODE: SM-0201

PRICE £7.84



Our Marine-Grade A4 stainless cabin latches provide maximum corrosion resistance for salt-water marine environments. These actually have two uses, the first is as a latch for latching or locking doors or lockers. The second use is as a hinge for items that want to be easily removable (eg table extensions, temporary or movable chart tables). As you can see from the pictures these come with a large diameter pin for extra security and to withstand high hinge loadings. These latches have a lovely polished finish and a sturdy construction.

Stainless Steel A4 (316) Cabin Lock / Latch / Locking Hinge 62mm

PRODUCT CODE: SM-0200

PRICE £7.26



Our Marine-Grade A4 stainless cabin latches provide maximum corrosion resistance for salt-water marine environments. These actually have two uses, the first is as a latch for latching or locking doors or lockers. The second use is as a hinge for items that want to be easily removable (eg table extensions, temporary or movable chart tables). As you can see from the pictures these come with a large diameter pin for extra security and to withstand high hinge loadings. These latches have a lovely polished finish and a sturdy construction.

Stainless Steel A4 (316) Door Holder, Marine & Sailing, Door, Locker, Cabinet, 34mm

PRODUCT CODE: SM-0196

PRICE £9.72

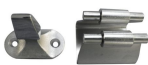


Our Marine-Grade A4 stainless steel door holders provide maximum corrosion resistance for salt-water marine environments. These door holders are typically used to keep doors in an open position. They have a sturdy construction and give a firm feel. They are suitable for marine applications on sailing and motor boats. These door holders can also be used for latching of cabinets and lockers (in their closed position), if a firm feel is required.

Stainless Steel A4 (316) Door Holder, Marine & Sailing, Door, Locker, Cabinet, 42mm

PRODUCT CODE: SM-0197

PRICE £12.00



Our Marine-Grade A4 stainless steel door holders provide maximum corrosion resistance for salt-water marine environments. These door holders are typically used to keep doors in an open position. They have a sturdy construction and give a firm feel. They are suitable for marine applications on sailing and motor boats. These door holders can also be used for latching of cabinets and lockers (in their closed position), if a firm feel is required.

GENERAL DOOR / LOCKER FURNITURE

Stainless Steel A4 (316) Flush Lifting Ring, Marine & Sailing, Door, Locker

PRODUCT CODE: SM-0170

PRICE £7.20



Our Marine-Grade A4 stainless steel flush lifting rings provide maximum corrosion resistance for salt-water marine environments. These lifting rings have a lovely polished finish making them ideal for both interior and exterior marine applications. These A4 stainless lifting rings have a solid quality feel and would be ideal for cabin doors, lockers, hatches and cabinets. The corrosion resistance also makes them suitable for exterior cockpit lockers and hatches.

Stainless Steel A4 (316) Swivel Hasp, Marine & Sailing, Door, Locker

PRODUCT CODE: SM-0233

PRICE £17.16



Our Marine-Grade A4 stainless steel swivel hasps provide maximum corrosion resistance for salt-water marine environments. These swivel hasps have a lovely polished finish making them ideal for both interior and exterior marine applications. These A4 stainless swivel hasps would be ideal for cabin doors, lockers, hatches and cabinets - anything that needs to latch into place. The corrosion resistance also makes them suitable for exterior cockpit lockers and hatches.

Stainless Steel Ball Catch, Locker Door, Cabin Door Latching in 316 (A4) Marine Grade

PRODUCT CODE: SM-0415

PRICE £10.27



Stainless Steel Ball Catch, Locker Door, Cabin Door Latching in 316 (A4) Marine Grade Stainless steel ball catch manufactured from marine grade stainless steel with a polished finish. The spring pre-load can be adjusted to give just the right feel when closing and opening cabin or locker doors. These ball catches have a minimal and attractive look and ideal for holding closed cabin lockers and doors. They are easily fitted to the inside of locker doors using self-tapping screws or wood screws. Our stainless steel ball catches can latch together in either orientation, so they can be fitted parallel as shown in the main product picture or at 90 degrees (typically the female part of the ball catch being screwed to the inside vertical surface of the locker or cupboard door and the female part of the latch being screwed to the top horizontal surface of the door frame).

LATCHES & LOCKING

Graveley Catch, Hinged Door Catch Plate

PRODUCT CODE: SM-0448 PRICE £7.68



Graveley catch plate, often used to secure hinged doors. Made from 316 stainless steel.

- Fixing size M4 or 3.5mm for self-tappers

Polished Door Latch, Magnetic Spring Slide Operation

PRODUCT CODE: SM-0449 PRICE £49.54



Polished stainless steel door latch. This beautifully finished latch is cast from marine-grade stainless, and has a polished finish. It combines the security of a mechanical latch, with the elegance of a magnetically operated sliding spring action. It has a great quality look and feel.

- Magnetic sliding operation
- Fixing size M4 or 4.2mm for self-tappers
- Polished stainless finish

Stainless Steel A4 (316) Cabin Hook, Marine & Sailing, Door, Cabinet Latch

PRODUCT CODE: SM-0199 PRICE £7.25



These cabin hooks in A4 stainless (316) have a lovely polished finish. They are mainly used for propping open doors, windows, shutters or lockers. These A4 stainless cabin hooks have a solid quality feel and would be ideal for cabin doors, lockers, shutters and cabinets. The corrosion resistance also makes them suitable for exterior doors or exterior use.

Stainless Steel A4 (316) Cabin Lock / Latch / Locking Hinge 114mm

PRODUCT CODE: SM-0201 PRICE £7.84



Our Marine-Grade A4 stainless cabin latches provide maximum corrosion resistance for salt-water marine environments. These actually have two uses, the first is as a latch for latching or locking doors or lockers. The second use is as a hinge for items that want to be easily removable (eg table extensions, temporary or movable chart tables). As you can see from the pictures these come with a large diameter pin for extra security and to withstand high hinge loadings. These latches have a lovely polished finish and a sturdy construction.

LATCHES & LOCKING

Stainless Steel A4 (316) Cabin Lock / Latch / Locking Hinge 62mm

PRODUCT CODE: SM-0200

PRICE £7.26



Our Marine-Grade A4 stainless cabin latches provide maximum corrosion resistance for salt-water marine environments. These actually have two uses, the first is as a latch for latching or locking doors or lockers. The second use is as a hinge for items that want to be easily removable (eg table extensions, temporary or movable chart tables). As you can see from the pictures these come with a large diameter pin for extra security and to withstand high hinge loadings. These latches have a lovely polished finish and a sturdy construction.

Stainless Steel A4 (316) Swivel Hasp, Marine & Sailing, Door, Locker

PRODUCT CODE: SM-0233

PRICE £17.16



Our Marine-Grade A4 stainless steel swivel hasps provide maximum corrosion resistance for salt-water marine environments. These swivel hasps have a lovely polished finish making them ideal for both interior and exterior marine applications. These A4 stainless swivel hasps would be ideal for cabin doors, lockers, hatches and cabinets - anything that needs to latch into place. The corrosion resistance also makes them suitable for exterior cockpit lockers and hatches.

Stainless Steel Ball Catch, Locker Door, Cabin Door Latching in 316 (A4) Marine Grade

PRODUCT CODE: SM-0415

PRICE £10.27



Stainless Steel Ball Catch, Locker Door, Cabin Door Latching in 316 (A4) Marine Grade Stainless steel ball catch manufactured from marine grade stainless steel with a polished finish. The spring pre-load can be adjusted to give just the right feel when closing and opening cabin or locker doors. These ball catches have a minimal and attractive look and ideal for holding closed cabin lockers and doors. They are easily fitted to the inside of locker doors using self-tapping screws or wood screws. Our stainless steel ball catches can latch together in either orientation, so they can be fitted parallel as shown in the main product picture or at 90 degrees (typically the female part of the ball catch being screwed to the inside vertical surface of the locker or cupboard door and the female part of the latch being screwed to the top horizontal surface of the door frame).

HOOKS & HANDLES

Awning Hook Loop

PRODUCT CODE: SM-0228 PRICE £2.38



Our 316 stainless steel awning hooks provide maximum corrosion resistance for salt-water marine environments. The superior corrosion resistance of these A4 grade awning hooks make them a great choice for sailing, motor boating and other water-sports applications. Awning hooks are commonly used as attachment points for canvas hoods, canopies, fender ropes and other low-load attachments in fibre-glass and marine ply.

Coat Hook (Marine-Grade, Single Fixing)

PRODUCT CODE: SM-0418 PRICE £4.07



Marine Coat Hook, 316 Stainless Steel, With Single Fixing Marine coat hook, manufactured from 316 stainless steel. Beautifully finished to look great in cabin spaces, and also being marine-grade stainless it will be absolutely fine in salt-water environments outside the boat as well. These stainless coat hooks have a single fixing, so in order to avoid rotation once installed, they have a small 'pip' on the back of the hook which are intended to slightly press into the wooden bulkhead which they are fitted to. For fixing these coat hooks to a wooden bulkhead we would recommend our size 2.9 self-tapping screws which are also in marine grade stainless. These are available in posi-drive or slot drive.

Coat Hook (Marine-Grade)

PRODUCT CODE: SM-0358 PRICE £4.01



Our 316 stainless steel coat hooks provide maximum corrosion resistance for salt-water marine environments. The superior corrosion resistance of these A4 marine-grade coat hooks make them ideal for both inside and outside the boat.

Coat Hook (Polished Marine-Grade Stainless Steel)

PRODUCT CODE: SM-0361 PRICE £4.54



Polished stainless steel coat hook. Beautifully finished to look great in cabin spaces, and also being marine-grade stainless (316) it will be absolutely fine in salt-water environments outside the boat as well.

HOOKS & HANDLES

Cupboard Handle (Marine-Grade)

PRODUCT CODE: SM-0359 PRICE £5.84



Our 316 stainless steel cupboard handles provide maximum corrosion resistance for salt-water marine environments. The superior corrosion resistance of these A4 marine-grade cupboard handles make them ideal for both inside and outside the boat.

Fender Hook (Up To 10mm Rope)

PRODUCT CODE: SM-0227 PRICE £4.00



Our Marine-Grade A4 stainless steel fender hooks provide maximum corrosion resistance for salt-water marine environments. The superior corrosion resistance of these A4 grade fender hooks make them a great choice for sailing, motor boating and other water-sports applications. The sprung hooks are commonly used as attachment points for fenders, but can also be used for hoods, canopies and other low-load attachments.

Fender Hook (Up To 8mm Rope)

PRODUCT CODE: SM-0226 PRICE £3.70



Our Marine-Grade A4 stainless steel fender hooks provide maximum corrosion resistance for salt-water marine environments. The superior corrosion resistance of these fender hooks make them a great choice for sailing, motor boating and other water-sports applications. These sprung hooks are commonly used as attachment points for fenders, but can also be used for hoods, canopies and other low-load attachments.

CABLE & ROPE FITTINGS

CABLE & ROPE FITTINGS

Boat Mooring Shock Absorber Spring



Boat mooring shock absorber spring made from marine grade A2 stainless steel. These come in two sizes

- Reduce stresses on mooring cleats / hull structure
- Improved comfort

Size	Each	
	Product Code	Price
265x5mm Wire	SM-0479	£8.28
335x6mm Wire	SM-0465	£14.36

Cable Clamps



Our Marine-Grade A4 stainless steel wire rope (cable) clamps provide maximum corrosion resistance for salt-water marine environments. The superior corrosion resistance of these A4 grade wire rope clamps make them a great choice for sailing, motor boating and other water-sports applications as well as architectural applications such as stair guards. Wire rope clamps are commonly used for terminating the ends of cables or wire ropes. Use in conjunction with our wire thimbles to create a loop at the end of the cable or rope for attaching with a shackle or similar.

Size	Each	
	Product Code	Price
For rope diameter 4mm	SM-0193	£1.38
For rope diameter 5mm	SM-0194	£1.90
For rope diameter 6mm	SM-0195	£1.84
For rope diameter 3mm	SM-0237	£1.30

CABLE & ROPE FITTINGS

Cable End Clamps



Cable end clamps in marine stainless steel. These egg-shaped 316 stainless cable end clamps have a polished finish and come in a range of sizes for wire rope diameters from 2mm to 6mm

Size	Each		Pack of 10	
	Product Code	Price	Product Code	Price
2mm Diameter Cable	SM-0419	£6.94	SM-0419-10	£45.82
3mm Diameter Cable	SM-0420	£6.64	SM-0420-10	£42.22
4mm Diameter Cable	SM-0421	£7.38	SM-0421-10	£51.97
5mm Diameter Cable	SM-0422	£7.84	SM-0422-10	£61.96
6mm Diameter Cable	SM-0423	£7.96	SM-0423-10	£66.38

Linch Pins



The superior corrosion resistance of these A4 grade linch pins (sometimes known as ring catches) make them a great choice for sailing, motor boating and other water-sports applications. Linch pins are commonly used for items that need to be quickly released, but have the security of the sprung security loop.

Size	Each	
	Product Code	Price
Size 4.5	SM-0351	£3.85
Size 6	SM-0352	£3.83
Size 7.9	SM-0353	£4.81

CABLE & ROPE FITTINGS

Nylon Rope Thimbles



Nylon Rope Thimble For Splicing End Loop In Mooring Line Or Anchor Line Nylon rope thimble for forming end loops in mooring lines, anchor lines or any other line or rope that requires a permanent end loop. Help to prolong the life of mooring lines, anchor lines or any other type of rope or line that needs a permanent loop in the end by fitting a nylon rope thimble. Commonly these will be attached to the rope by splicing to form a permanent loop. Attachment is then made by use of a shackle or similar fitting. These nylon rope thimbles come in a range of sizes to suit the chosen diameter of rope, please consult the size chart which can be seen by choosing the size from the drop-down menu.

Size	Each	
	Product Code	Price
For rope diameter 4mm	SM-0380	£0.26
For rope diameter 6mm	SM-0381	£0.34
For rope diameter 8mm	SM-0382	£0.40
For rope diameter 10mm	SM-0383	£0.73
For rope diameter 12mm	SM-0384	£0.74
For rope diameter 14mm	SM-0385	£1.24
For rope diameter 16mm	SM-0386	£2.28
For rope diameter 18mm	SM-0387	£2.27
For rope diameter 20mm	SM-0388	£3.49

Pelican Hooks



Our Marine-Grade A4 stainless steel pelican-hooks provide maximum corrosion resistance for salt-water marine environments. The superior corrosion resistance of these A4 grade pelican-hooks make them a great choice for sailing, motor boating and other water-sports applications. Pelican hooks are commonly used for safety rails where a quick release is needed, either at the deck side or pushpit area where passengers get on and off the boat.

Size	Each	
	Product Code	Price
M6	SM-0292	£5.38
M8	SM-0293	£6.71
M10	SM-0294	£13.80

CABLE & ROPE FITTINGS

R-Clips



R-Clips for securing clevis pins, cotter pins and other pivot pins, typically used to secure canopy frames and other deck-mounted items on your boat that need easy removal. Manufactured from marine grade A4 stainless steel as you would expect. Beta pins have the advantages over split-pins that they are fully re-usable and easy to fit and remove time and time again,

Size	Each	
	Product Code	Price
2mm	SM-0347	£1.19
3mm	SM-0348	£1.84
4mm	SM-0349	£2.74
5mm	SM-0350	£4.07

Ring Pins



Ringpins - for securing clevis pins, cotter pins and other pivot pins, typically used to secure clevis pins to secure the ends of turnbuckles, sheet blocks and other deck-mounted items on your boat. Manufactured from marine grade A4 stainless steel as you would expect. Ring pins have the advantages over split-pins that they are fully re-usable and their rounded shape minimises any chances of damage to sails or the possibility of catching on ropes such as fore-sail sheets.

Size	Each	
	Product Code	Price
1x10mm	SM-0354	£0.14
1.2x15mm	SM-0355	£0.22
1.5x20mm	SM-0356	£0.22
1.8x25mm	SM-0357	£0.36

CABLE & ROPE FITTINGS

Threaded Eye Ends



Our Marine-Grade A4 stainless steel threaded eye-ends provide maximum corrosion resistance for salt-water marine environments. The superior corrosion resistance of these A4 grade threaded eye ends (suitable for turnbuckles / rigging screws / bottle screws) make them ideal for applying tension to sailing boat and dinghy rigging and shrouds where they attach to deck fittings.

Size	Each	
	Product Code	Price
M6 RH thread	SM-0330	£3.11
M6 LH thread	SM-0333	£2.98
M8 RH thread	SM-0331	£3.66
M8 LH thread	SM-0334	£3.68
M10 RH thread	SM-0332	£4.30
M10 LH thread	SM-0335	£4.42

Turnbuckles / Rigging Screws



Our Marine-Grade A4 stainless steel turnbuckles provide maximum corrosion resistance for salt-water marine environments. The superior corrosion resistance of these A4 grade turnbuckles (sometimes known as bottle-screws or rigging screws) make them ideal for applying tension to sailing boat and dinghy rigging and shrouds where they attach to deck fittings. Stainless steel turnbuckles also have architectural applications such as stair rail guards made with stainless steel cable or wire-rope.

Size	Each	
	Product Code	Price
M4	SM-0165	£5.39
M5	SM-0156	£5.65
M6	SM-0131	£6.13
M8	SM-0132	£7.62
M10	SM-0133	£9.62

CABLE & ROPE FITTINGS

U-bolt With Counter-Plates



Our Marine-Grade A4 stainless steel U-bolts provide maximum corrosion resistance for salt-water marine environments. The superior corrosion resistance of these A4 grade U-bolts make them a great choice for sailing, motor boating and other water-sports applications. U-bolts are commonly used as attachment points for rigging shrouds or for attachment points for winching onto your trailer.

Size	Each	
	Product Code	Price
M8	SM-0231	£7.24
M10	SM-0232	£7.56

Wire Eye Straps



Our Marine-Grade A4 stainless steel wire-straps provide maximum corrosion resistance for salt-water marine environments. The superior corrosion resistance of these A4 grade wire eye straps make them a great choice for sailing, motor boating and other water-sports applications. Wire straps are commonly used as attachment points for canvas hoods, canopies, fender ropes and other low-load attachments in fibre-glass and marine ply.

Size	Each	
	Product Code	Price
4mm	SM-0303	£0.65
5mm	SM-0134	£0.67
6mm	SM-0135	£1.00
8mm	SM-0136	£1.33
10mm	SM-0137	£2.56

Wire Rope Thimbles



Our Marine-Grade A4 stainless steel wire thimbles provide maximum corrosion resistance for salt-water marine environments. The superior corrosion resistance of these A4 grade wire thimbles make them a great choice for sailing, motor boating and other water-sports applications. Wire thimbles are commonly used for terminating the ends of cables or wire ropes and can also be used for terminating ropes (often in conjunction with splicing) to create a loop at the end of the cable or rope for attaching with a shackle or similar.

Size	Each	
	Product Code	Price
For rope diameter 3mm	SM-0207	£0.35
For rope diameter 4mm	SM-0179	£0.42
For rope diameter 5mm	SM-0180	£0.46
For rope diameter 6mm	SM-0181	£0.62
For rope diameter 8mm	SM-0182	£0.88
For rope diameter 10mm	SM-0183	£1.70
For rope diameter 12mm	SM-0214	£2.29
For rope diameter 14mm	SM-0215	£3.47

SHACKLES & SWIVELS

SHACKLES & SWIVELS

Bow-Shackles



Our Marine-Grade A4 stainless Bow-shackles provide maximum corrosion resistance for salt-water marine environments. The superior corrosion resistance of these A4 grade Bow-shackles make them a great choice for sailing, motor boating and other water-sports applications. Bow shackles are commonly used for attaching ropes, anchors and chains for sailing, rigging or lifting applications. Compared to the regular D-shackle, a Bow-shackle is generally suited to applications where the loading may involve side loading rather than a straight pull, reducing the possibility of bending the shackle under side loading conditions.

Size	Each	
	Product Code	Price
M5	SM-0288	£1.91
M6	SM-0289	£2.15
M8	SM-0290	£3.40
M10	SM-0291	£4.66

Chain Quick Links



Our Marine-Grade A4 stainless chain quick links provide maximum corrosion resistance for salt-water marine environments. The superior corrosion resistance of these chain quick links make them a great choice for sailing, motor boating and other water-sports applications. Quick links are commonly used for attaching chains, anchors, ropes, sails where a combination of strength and ease of use is needed.

Size	Each	
	Product Code	Price
M5	SM-0217	£2.26
M6	SM-0218	£2.90
M8	SM-0219	£4.39
M10	SM-0283	£5.44

SHACKLES & SWIVELS

D-Shackles



Our Marine-Grade A4 stainless short D-shackles provide maximum corrosion resistance for salt-water marine environments. The superior corrosion resistance of these A4 grade D-shackles make them a great choice for sailing, motor boating and other water-sports applications. D shackles are commonly used for attaching ropes, anchors and chains for sailing, rigging or lifting applications.

Size	Each	
	Product Code	Price
M4	SM-0030	£1.60
M5	SM-0029	£1.61
M6	SM-0018	£1.74
M8	SM-0019	£3.04
M10	SM-0038	£3.92
M12	SM-0216	£5.87

D-Shackles (Long)



Our Marine-Grade A4 stainless steel long D-shackles provide maximum corrosion resistance for salt-water marine environments. The superior corrosion resistance of these A4 grade long D-shackles make them a great choice for sailing, motor boating and other water-sports applications. D shackles are commonly used for attaching ropes, anchors and chains for sailing, rigging or lifting applications. These extra long version of the common D shackle make them well suited to attaching halyards to sails, the extra length needed to span the distance from the corner of the sail to the eyelet.

Size	Each	
	Product Code	Price
M5	SM-0142	£2.17
M6	SM-0143	£2.64
M8	SM-0144	£3.79
M10	SM-0145	£5.74

SHACKLES & SWIVELS

Flat Shackles



Stainless Steel Flat Shackle Stainless steel flat shackle, sometimes known as strip shackles. These are manufactured from A4 marine grade stainless steel so will not suffer from degradation or staining in salt-water. Shackles come in many types and sizes, the stainless steel flat shackle is mainly a light-weight version of the more common short D-shackle for use in cases where light-weight is a high priority. An typical area on a sailing boat where the flat shackle would be used is to attach the topping lift to the end of the boom, particularly on smaller boats and sailing dinghy's it is desirable to keep the mass of the boom assembly to an absolute minimum so to reduce shock loading when jibing. Our stainless steel flat shackle comes in metric sizes M4, M5 and M6 for larger sizes of shackle with higher load capacities please refer to the other shackles in our range.

Size	Each	
	Product Code	Price
M4	SM-0377	£1.99
M5	SM-0378	£2.27
M6	SM-0379	£3.46

Pelican Hooks



Our Marine-Grade A4 stainless steel pelican-hooks provide maximum corrosion resistance for salt-water marine environments. The superior corrosion resistance of these A4 grade pelican-hooks make them a great choice for sailing, motor boating and other water-sports applications. Pelican hooks are commonly used for safety rails where a quick release is needed, either at the deck side or pushpit area where passengers get on and off the boat.

Size	Each	
	Product Code	Price
M6	SM-0292	£5.38
M8	SM-0293	£6.71
M10	SM-0294	£13.80

SHACKLES & SWIVELS

Shackle Keys

PRODUCT CODE: SM-0390 PRICE £2.56



Stainless Steel Shackle Key Stainless steel shackle key, manufactured from 316 stainless steel for a long-lasting stain-free appearance. These shackle keys have a looped end so that they can be attached to your key-ring so that they are always to hand for tightening or loosening shackles around the boat. The shackle key is used by inserting the end of the shackle pin into the slot and sliding it along until it grips, before turning to loosen or tighten the shackle pin. We have all been in that situation where you've been up on deck to do a simple job like hoisting the main sail or setting the anchor and for some unexpected reason you have found yourself wanting to remove a shackle which is just too tight to undo by hand. Well next time this happens, make sure you have one of these handy shackle keys with you (attached to your key-ring or lanyard).

Spring Hooks



Our Marine-Grade A4 stainless steel spring-hooks provide maximum corrosion resistance for salt-water marine environments. The superior corrosion resistance of these A4 grade spring-hooks make them a great choice for sailing, motor boating and other water-sports applications. Springhooks are commonly used for attaching ropes for safety harnesses and other sailing applications. Spring-hooks also make a great way of attaching all kinds of ropes and leads.

Size	Each	
	Product Code	Price
6x60	SM-0127	£1.97
7x70	SM-0124	£3.04
8x80	SM-0125	£3.49
10x100	SM-0126	£5.08

Spring Hooks (Safety Screw)



Our Marine-Grade A4 stainless steel spring-hooks provide maximum corrosion resistance for salt-water marine environments. The superior corrosion resistance of these A4 grade spring-hooks make them a great choice for sailing, motor boating and other water-sports applications. Springhooks are commonly used for attaching ropes for safety harnesses and other sailing applications. Spring-hooks also make a great way of attaching all kinds of ropes and leads. These spring hooks come with a safety screw to prevent accidental un-hooking.

Size	Each	
	Product Code	Price
8x80	SM-0186	£5.69
7x70	SM-0185	£4.69
6x60	SM-0184	£3.96

SHACKLES & SWIVELS

Spring Hooks (With Eyelet)



Our Marine-Grade A4 stainless steel spring-hooks provide maximum corrosion resistance for salt-water marine environments. The superior corrosion resistance of these A4 grade spring-hooks make them a great choice for sailing, motor boating and other water-sports applications. Springhooks are commonly used for attaching ropes for safety harnesses and other sailing applications. Spring-hooks also make a great way of attaching all kinds of ropes and leads.

Size	Each	
	Product Code	Price
6x60	SM-0074	£2.22
7x70	SM-0128	£3.28
8x80	SM-0129	£3.72
10x100	SM-0146	£5.08

Swivel Connectors



Our Marine-Grade A4 stainless steel swivel connectors provide maximum corrosion resistance for salt-water marine environments. The superior corrosion resistance of these A4 grade swivels make them a great choice for sailing, motor boating and other water-sports applications. Swivels are commonly used for attaching anchors or mooring chains / warps to avoid twisting as the boat swings around the anchorage or mooring, with wind and tide changes.

Size	Each	
	Product Code	Price
M6	SM-0340	£3.66
M8	SM-0341	£5.74
M10	SM-0342	£7.68

Swivel Key Clasp, 316 Stainless Steel



Swivel key clasp, manufactured from 316 stainless steel. Two sizes are available. Keep your keys secure to avoid them going overboard.

- 316 marine stainless construction

Size	Each	
	Product Code	Price
64mm	SM-0480	£4.72
80mm	SM-0481	£5.34

SHACKLES & SWIVELS

Swivel Snap Shackles



Our Marine-Grade A4 stainless steel snap-shackles provide maximum corrosion resistance for salt-water marine environments. The superior corrosion resistance of these A4 grade snap-shackles make them a great choice for sailing, motor boating and other water-sports applications. Snap shackles are commonly used for attaching sheets and ropes for quick change of fore sails, spinnakers and other sailing applications. Snap-shackles also make a great way of attaching harnesses and safety ropes.

Size	Each	
	Product Code	Price
70mm	SM-0075	£5.20
87mm	SM-0076	£6.23
128mm	SM-0130	£9.59

Twisted Shackle In 316 Stainless Steel, Sail Clew



Twisted version of the common D-shackle manufactured from 316 stainless steel. The 90-degree twist is useful for attaching sail clews or other areas where alignment is otherwise compromised without an additional shackle or link

- 90-degree twist
- 316 Stainless (marine grade)

Size	Each	
	Product Code	Price
M5	SM-0475	£2.46
M6	SM-0476	£2.92
M8	SM-0477	£4.03
M10	SM-0530	£5.76

Wide D-Shackle In 316 Stainless Steel, Mooring Buoys



Wide D-Shackle In 316 Stainless Steel, Mooring BuoysWide version of the common D-shackle manufactured from 316 stainless steel. The extra-wide opening (see detailed dimensions for each size of shackle) make these suitable where other shackles cannot reach, eg mooring buoys.

- Extra-wide jaw opening
- 316 Stainless (marine grade)

Size	Each	
	Product Code	Price
M5	SM-0450	£2.22
M6	SM-0454	£3.91
M8	SM-0451	£3.88
M10	SM-0478	£5.53
M12	SM-0452	£7.18

HOSE & PIPE FITTINGS

HOSE & PIPE FITTINGS

Boat Hull Skin Fitting, Pipe Inlet / Outlet 316 Stainless Steel



Boat hull skin fitting / hose inlet fitting / hose outlet fitting manufactured in 316 (marine grade) stainless steel. These come in a range of thread sizes from 3/8 to 1" BSP

- 316 (marine-grade) stainless
- Polished stainless steel flange end
- Including matching nut

Size	Each	
	Product Code	Price
3/8"	SM-0464	£11.88
1/2"	SM-0462	£8.90
3/4"	SM-0463	£12.19
1"	SM-0466	£16.21

HOSE & PIPE FITTINGS

Jubilee Clips / Hose Clips



Our Marine-Grade A4 stainless steel metric Jubilee clips are the genuine article and provide maximum corrosion resistance for salt-water marine environments. The superior corrosion resistance of these A4 grade Jubilee clips make them a great choice for sailing, and motor boat applications. Also popular with 4x4 and off-roading enthusiasts. These A4 stainless Jubilee clips are Lloyds approved giving you peace of mind to use them for submerged applications such as out-drives. Also perfect for heads, sink outlets, through-hull pipe / hose attachment, fuel lines, exhaust hoses and other waste pipes.

Size	Each	
	Product Code	Price
9.5-12	SM-0083	£3.86
11-16	SM-0084	£3.88
13-20	SM-0085	£3.89
16-22	SM-0086	£4.44
18-25	SM-0087	£4.51
22-30	SM-0088	£4.74
25-35	SM-0089	£4.84
32-45	SM-0090	£5.05
45-60	SM-0091	£5.52
60-80	SM-0092	£5.84
70-90	SM-0093	£5.95
90-120	SM-0094	£6.46
120-150	SM-0095	£6.97
135-165	SM-0096	£7.19
158-190	SM-0097	£7.51
184-216	SM-0098	£7.84
210-242	SM-0099	£7.99
235-267	SM-0100	£8.44

HOSE & PIPE FITTINGS

P-Clips / Hose Clips



Stainless steel pipe clips (P-clips) for mounting hoses and pipes in and around the boat. These are manufactured with a stainless steel inner band and a protective rubber sheave to give the best combination of strength and security. Our stainless steel pipe clips come in a range of sizes from 5mm to 44mm covering most applications from fuel lines to waste pipes and water pipes. Use these stainless steel pipe clips to secure long hose or pipe runs to and from marine engines such as for fuel lines, water cooling lines which might be susceptible to damage or loosening from vibrations during use. Also great to just hold pipe routes neatly and out of the way in and around bilges or engine bay compartments.

Size	Each	
	Product Code	Price
5mm	SM-0391	£1.80
6mm	SM-0392	£1.84
8mm	SM-0393	£1.86
9mm	SM-0394	£1.88
10mm	SM-0395	£1.90
12mm	SM-0396	£1.96
13mm	SM-0397	£1.97
14mm	SM-0398	£2.00
15mm	SM-0399	£2.03
16mm	SM-0400	£2.04
17mm	SM-0401	£2.08
18mm	SM-0402	£2.11
19mm	SM-0403	£2.15
20mm	SM-0404	£2.20
21mm	SM-0405	£2.23
22mm	SM-0406	£2.26
25mm	SM-0407	£2.33
27mm	SM-0408	£2.38
28mm	SM-0409	£2.40
29mm	SM-0410	£2.42
30mm	SM-0411	£2.46
35mm	SM-0412	£2.52
40mm	SM-0413	£2.72
44mm	SM-0414	£2.95

HOSE & PIPE FITTINGS

Stainless Steel Pipe Fitting With External Thread (BSP)



Stainless steel pipe fitting with external thread. BSP threaded marine-grade stainless steel hose fitting with ridged nozzle for secure attachment. These are compatible with our BSP sea cocks fittings. Size range from 3/8" to 1" BSP

- 316 marine stainless construction
- Ridged hose fitting for secure attachment
- BSP thread

Size	Each	
	Product Code	Price
3/8"	SM-0470	£3.40
1/2"	SM-0468	£4.22
3/4"	SM-0469	£5.51
1"	SM-0467	£6.78

Stainless Steel Pipe Fitting With Internal Thread (BSP)



Stainless steel pipe fitting with internal thread. BSP threaded marine-grade stainless steel hose fitting with ridged nozzle for secure attachment. Size range from 3/8" to 1" BSP

- 316 marine stainless construction
- Ridged hose fitting for secure attachment
- BSP thread

Size	Each	
	Product Code	Price
3/8"	SM-0474	£3.52
1/2"	SM-0472	£4.45
3/4"	SM-0473	£8.20
1"	SM-0471	£11.28

Stainless Steel Sea Cocks, Boat Sea Cocks in 316 Stainless



Stainless steel sea cocks with ball-valve operation. These are exceptionally well made with a 90-degree operation from fully closed to fully open. The operation handles have a plastic coating for comfortable operation, and a safety clasp to keep ensure that they stay in the desired position. Size range from 3/8" to 1" BSP (12.5mm to 25mm bore)

- 316 marine stainless construction
- 90-degree fully-open to fully-closed operation
- Additional safety clasp included
- BSP thread

Size	Each	
	Product Code	Price
3/8"	SM-0457	£11.86
1/2" BSP	SM-0455	£13.00
3/4" BSP	SM-0456	£17.60
1" BSP	SM-461	£22.94

CANOPY FITTINGS

CANOPY FITTINGS

Awning Hook Loop

PRODUCT CODE: SM-0228

PRICE £2.38



Our 316 stainless steel awning hooks provide maximum corrosion resistance for salt-water marine environments. The superior corrosion resistance of these A4 grade awning hooks make them a great choice for sailing, motor boating and other water-sports applications. Awning hooks are commonly used as attachment points for canvas hoods, canopies, fender ropes and other low-load attachments in fibre-glass and marine ply.

Deck Hinge With Removable Pin For Spray Hoods & Canopies

PRODUCT CODE: SM-0531

PRICE £7.18



Deck Hinge With Removable Pin For Spray Hoods & Canopies. This secures to the deck and acts as a hinge point for frames for boat hoods, boat canopies etc. The pin can easily be removed without the need for any tools.

- 316 Marine grade stainless
- Removable pin
- 90-degree angle
- Polished finish
- Fixing size M5 or 4.8mm for self-tappers

Fender Hook (Up To 10mm Rope)

PRODUCT CODE: SM-0227

PRICE £4.00



Our Marine-Grade A4 stainless steel fender hooks provide maximum corrosion resistance for salt-water marine environments. The superior corrosion resistance of these A4 grade fender hooks make them a great choice for sailing, motor boating and other water-sports applications. The sprung hooks are commonly used as attachment points for fenders, but can also be used for hoods, canopies and other low-load attachments.

Fender Hook (Up To 8mm Rope)

PRODUCT CODE: SM-0226

PRICE £3.70



Our Marine-Grade A4 stainless steel fender hooks provide maximum corrosion resistance for salt-water marine environments. The superior corrosion resistance of these fender hooks make them a great choice for sailing, motor boating and other water-sports applications. These sprung hooks are commonly used as attachment points for fenders, but can also be used for hoods, canopies and other low-load attachments.

CANOPY FITTINGS

Quick Release Cotter Pin, Stainless Steel Release Pin

Quick release cotter pin, manufactured from 316 (marine-grade) stainless steel.



- 316 (marine-grade) stainless
- Sprung ball-end

Size	Each		Pack of 10	
	Product Code	Price	Product Code	Price
5x28mm	SM-0434	£3.28	SM-0434-10	£14.41
6x35mm	SM-0435	£3.83	SM-0435-10	£19.00
8x33mm	SM-0436	£4.92	SM-0436-10	£25.97
8x53mm	SM-0437	£5.04	SM-0437-10	£28.40

Stainless Steel D-Rings, Welded And Polished in 316 Marine Grade Stainless



Stainless steel D Rings in a variety of sizes. These are very strong because they have been welded together at the join, and then polished to give a great looking finish. These D-Rings are suitable for marine applications as they are made from 316 (marine-grade) stainless so will stay in great condition in the harshest of environments. Use for hood and awning straps etc.

Size	Each	
	Product Code	Price
3x15mm	SM-0367	£0.74
3x20mm	SM-0368	£0.72
4x20mm	SM-0369	£0.86
4x25mm	SM-0370	£1.13
5x25mm	SM-0371	£1.18
5x30mm	SM-0372	£1.39
6x30mm	SM-0373	£1.72
6x40mm	SM-0374	£2.02
6x50mm	SM-0375	£2.14
8x50mm	SM-0376	£2.21

CANOPY FITTINGS

Stainless Steel Deck Hinge For Spray Hoods & Canopies etc

PRODUCT CODE: SM-0443

PRICE £6.30



Stainless steel deck hinge, for spray hoods and canopies. This secures to the deck and acts as a hinge point for frames for boat hoods, boat canopies etc.

- 316 Marine grade stainless
- 90-degree angle
- Polished finish
- Fixing size M5 or 4.8mm for self-tappers

Stainless Steel Strap Buckle / Strap Slide, in 316 Stainless Steel



Stainless steel strap buckle / strap slide in 316 (marine grade) stainless steel. For safety harnesses, awning straps, hood or canopy straps, or general use with webbing.

- 316 (marine-grade) stainless
- Loop is welded and polished for strength
- Knurled slide bar

Size	Each	
	Product Code	Price
25mm	SM-0458	£3.41
43mm	SM-0459	£5.58
50mm	SM-0460	£5.76

Stainless Steel Strap End / Staple / Securing Bracket



Stainless steel strap end / staple in 316 (marine grade) stainless steel. For awning straps / canopy straps / bimini tensioning straps etc.

- 316 (marine-grade) stainless
- Polished finish
- Fixing size, M4 or 4.2mm for self-tappers

Size	Each	
	Product Code	Price
26mm	SM-0432	£5.36
36mm	SM-0433	£5.36

CANOPY FITTINGS

Wire Eye Straps



Our Marine-Grade A4 stainless steel wire-straps provide maximum corrosion resistance for salt-water marine environments. The superior corrosion resistance of these A4 grade wire eye straps make them a great choice for sailing, motor boating and other water-sports applications. Wire straps are commonly used as attachment points for canvas hoods, canopies, fender ropes and other low-load attachments in fibre-glass and marine ply.

Size	Each	
	Product Code	Price
4mm	SM-0303	£0.65
5mm	SM-0134	£0.67
6mm	SM-0135	£1.00
8mm	SM-0136	£1.33
10mm	SM-0137	£2.56

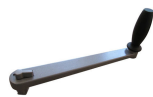
SAILING TOOLS

SAILING TOOLS

Sailing Winch Handle, Cast Aluminium Construction, Locking Lever

PRODUCT CODE: SM-0360

PRICE £15.00



These cast aluminium winch handles are just the job if you are after a solidly made replacement winch handle for your sailing boat. The sprung locking lever has a solid quality feel to it. The main casting of this winch handle is ribbed for added reinforcement, and the sturdy plastic handle feels good in the hand. What more could you want.

Shackle Keys

PRODUCT CODE: SM-0390

PRICE £2.56



Stainless Steel Shackle Key Stainless steel shackle key, manufactured from 316 stainless steel for a long-lasting stain-free appearance. These shackle keys have a looped end so that they can be attached to your key-ring so that they are always to hand for tightening or loosening shackles around the boat. The shackle key is used by inserting the end of the shackle pin into the slot and sliding it along until it grips, before turning to loosen or tighten the shackle pin. We have all been in that situation where you've been up on deck to do a simple job like hoisting the main sail or setting the anchor and for some unexpected reason you have found yourself wanting to remove a shackle which is just too tight to undo by hand. Well next time this happens, make sure you have one of these handy shackle keys with you (attached to your key-ring or lanyard).

Skippers Knife With Stainless Steel Locking Blade and Aluminium Body

PRODUCT CODE: SM-0178

PRICE £7.33



This is a great little knife, easy to use with integral belt clip, a solid sturdy construction, sharp blade with serrated blade ideal for having with you around the boat for all sorts of jobs. The blade locks out when open for ease of use and safety. We use these all the time.

Swivel Key Clasp, 316 Stainless Steel



Swivel key clasp, manufactured from 316 stainless steel. Two sizes are available. Keep your keys secure to avoid them going overboard.

- 316 marine stainless construction

Size	Each	
	Product Code	Price
64mm	SM-0480	£4.72
80mm	SM-0481	£5.34

INDEX

BOLTS & SCREWS

Long Eye Bolt, 316 Stainless Steel, Marine Grade	- 10
Raised Slot Countersunk Set Screws, Stainless Steel (316) A4-Marine Grade	- 10
Set-Screws Slot Pan-Head Stainless Steel (316) A4-Marine Grade	- 11
Stainless Steel Countersunk Socket Set Screws	- 12
Stainless Steel Hex Set Screw in 316 (A4 Marine Grade)	- 13

CABLE OUTLETS & CONNECTORS

Boat Waterproof Electrical Connector, 5A 2-Pole & 3-Pole	- 30
Waterproof Electrical Connector In Chrome Plated Brass	- 30
Waterproof Through-Deck Electrical Cable Outlet / Gland In Chrome Plated Brass	- 31

CANOPY FITTINGS

Awning Hook Loop	- 69
Deck Hinge With Removable Pin For Spray Hoods & Canopies	- 69
Fender Hook (Up To 10mm Rope)	- 69
Fender Hook (Up To 8mm Rope)	- 69
Quick Release Cotter Pin, Stainless Steel Release Pin	- 70
Stainless Steel D-Rings, Welded And Polished in 316 Marine Grade Stainless	- 70
Stainless Steel Deck Hinge For Spray Hoods & Canopies etc	- 71
Stainless Steel Strap Buckle / Strap Slide, in 316 Stainless Steel	- 71
Stainless Steel Strap End / Staple / Securing Bracket	- 71
Wire Eye Straps	- 72

COTTER PINS, SPLIT PINS & CLEVIS PINS

Cotter Pins	- 21
Linch Pins	- 22
Quick Release Cotter Pin, Stainless Steel Release Pin	- 22
R-Clips	- 23
Ring Pins	- 23
Split Pins / Split Cotter Pins	- 24

DECK FITTINGS - GENERAL

U-bolt With Counter-Plates	- 38
Wire Eye Straps	- 38

LIGHTING

Double LED Lighting Unit 12V Single LED In Plastic Casing	- 26
High-Power Waterproof LED Light With Stainless Steel Cover 12V 16 LED	- 26
LED Light 6-LED Linear. Surface Mounted. Waterproof To IP67	- 26
Marine Navigation Lights For Boats Up To 12m	- 27
WaterProof Marine LED Flush Mount Light With Stainless Steel Cover 12V 3 LED Boat Sailing / Cabin IP66	- 27

NUTS

Dome Nuts Stainless Steel A4-Marine Grade (316) M3 M4 M5 M6 M8 M10 M12	- 19
Nuts Stainless Steel A4-Marine Grade (316) M3 M4 M5 M6 M8 M10 M12	- 19
Nyloc Nuts Stainless Steel A4-Marine Grade (316) M3 M4 M5 M6 M8 M10 M12	- 20

SHACKLES & SWIVELS

Bow-Shackles	- 57
Chain Quick Links	- 57

INDEX

D-Shackles	- 58
D-Shackles (Long)	- 58
Flat Shackles	- 59
Pelican Hooks	- 59
Shackle Keys	- 60
Spring Hooks	- 60
Spring Hooks (Safety Screw)	- 60
Spring Hooks (With Eyelet)	- 61
Swivel Connectors	- 61
Swivel Key Clasp, 316 Stainless Steel	- 61
Swivel Snap Shackles	- 62
Twisted Shackle In 316 Stainless Steel, Sail Clew	- 62
Wide D-Shackle In 316 Stainless Steel, Mooring Buoys	- 63

BRACKETS, MOUNTS & HOLDERS

Flush Fitting Fishing Rod Holder	- 36
Oarlock / Rowlock Socket, In Stainless Steel	- 36
Oarlock / Rowlock, Dinghy Oar Socket, In Stainless Steel (Pair)	- 36
Stainless Steel Deck Hinge For Spray Hoods & Canopies etc	- 36
Stainless Steel Strap End / Staple / Securing Bracket	- 37
Water-Ski Mount Hook	- 37
Water-Ski Rope Hook	- 37

CABLE & ROPE FITTINGS

Boat Mooring Shock Absorber Spring	- 50
Cable Clamps	- 50
Cable End Clamps	- 51
Linch Pins	- 51
Nylon Rope Thimbles	- 52
Pelican Hooks	- 52
R-Clips	- 53
Ring Pins	- 53
Threaded Eye Ends	- 54
Turnbuckles / Rigging Screws	- 54
U-bolt With Counter-Plates	- 55
Wire Eye Straps	- 55
Wire Rope Thimbles	- 56

FAIRLEADS

Fairleads	- 35
Fairleads (Left & Right Hand Pair)	- 35

GENERAL DOOR / LOCKER FURNITURE

Graveley Catch, Hinged Door Catch Plate	- 43
Hatch Lifting Ring / Floor Lifting Ring, Round, Stainless Steel	- 43
Hatch Spring Holder / Door Holder, Stainless Steel	- 43
Stainless Steel A4 (316) Cabin Hook, Marine & Sailing, Door, Cabinet Latch	- 43
Stainless Steel A4 (316) Cabin Lock / Latch / Locking Hinge 114mm	- 44
Stainless Steel A4 (316) Cabin Lock / Latch / Locking Hinge 62mm	- 44
Stainless Steel A4 (316) Door Holder, Marine & Sailing, Door, Locker, Cabinet, 34mm	- 44
Stainless Steel A4 (316) Door Holder, Marine & Sailing, Door, Locker, Cabinet, 42mm	- 44
Stainless Steel A4 (316) Flush Lifting Ring, Marine & Sailing, Door, Locker	- 45

INDEX

Stainless Steel A4 (316) Swivel Hasp, Marine & Sailing, Door, Locker	- 45
Stainless Steel Ball Catch, Locker Door, Cabin Door Latching in 316 (A4) Marine Grade	- 45

HINGES

Stainless Steel A2 Oval Hinge, 51x35mm, Marine & Sailing, Door, Locker, Cabinet	- 39
Stainless Steel A2 Oval Hinge, 67x48mm, Marine & Sailing, Door, Locker, Cabinet	- 39
Stainless Steel A4 (316) Butt Hinge, Marine & Sailing, Door, Locker, Cabinet 38x38mm	- 39
Stainless Steel A4 (316) Butt Hinge, Marine & Sailing, Door, Locker, Cabinet 50x50mm	- 39
Stainless Steel A4 (316) Cabin Lock / Latch / Locking Hinge 114mm	- 40
Stainless Steel A4 (316) Door Hinge, Marine & Sailing, Door, Locker, Cabinet 100x38mm	- 40
Stainless Steel A4 (316) Door Hinge, Marine & Sailing, Door, Locker, Cabinet 56x38mm	- 40
Stainless Steel A4 (316) Door Hinge, Marine & Sailing, Door, Locker, Cabinet 76X38mm	- 40
Stainless Steel A4 (316) Door Hinge, Marine & Sailing, Door, Locker, Cabinet 76x38mm	- 41
Stainless Steel A4 (316) Offset Hinge, Marine & Sailing, Door, Locker, Cabinet 56x38mm	- 41
Stainless Steel A4 (316) Offset Hinge, Marine & Sailing, Door, Locker, Cabinet 70x38mm	- 41
Stainless Steel A4 (316) Strap Hinge, Marine & Sailing, Door, Locker, Cabinet 100x26mm	- 41
Stainless Steel A4 (316) Strap Hinge, Marine & Sailing, Door, Locker, Cabinet 160x27mm	- 42
Stainless Steel Hinge, 30x40mm Butt Hinge	- 42

HOOKS & HANDLES

Awning Hook Loop	- 48
Coat Hook (Marine-Grade)	- 48
Coat Hook (Marine-Grade, Single Fixing)	- 48
Coat Hook (Polished Marine-Grade Stainless Steel)	- 48
Cupboard Handle (Marine-Grade)	- 49
Fender Hook (Up To 10mm Rope)	- 49
Fender Hook (Up To 8mm Rope)	- 49

HOSE & PIPE FITTINGS

Boat Hull Skin Fitting, Pipe Inlet / Outlet 316 Stainless Steel	- 64
Jubilee Clips / Hose Clips	- 65
P-Clips / Hose Clips	- 66
Stainless Steel Pipe Fitting With External Thread (BSP)	- 67
Stainless Steel Pipe Fitting With Internal Thread (BSP)	- 67
Stainless Steel Sea Cocks, Boat Sea Cocks in 316 Stainless	- 68

LATCHES & LOCKING

Graveley Catch, Hinged Door Catch Plate	- 46
Polished Door Latch, Magnetic Spring Slide Operation	- 46
Stainless Steel A4 (316) Cabin Hook, Marine & Sailing, Door, Cabinet Latch	- 46
Stainless Steel A4 (316) Cabin Lock / Latch / Locking Hinge 114mm	- 46
Stainless Steel A4 (316) Cabin Lock / Latch / Locking Hinge 62mm	- 47
Stainless Steel A4 (316) Swivel Hasp, Marine & Sailing, Door, Locker	- 47
Stainless Steel Ball Catch, Locker Door, Cabin Door Latching in 316 (A4) Marine Grade	- 47

LIFTING EYES

Lifting Eye Bolts Stainless Steel A4 Marine-Grade (316)	- 25
Lifting Eye Nuts Stainless Steel A4 Marine-Grade (316)	- 25

SAILING JAM CLEATS & CAM CLEATS

Aluminium Cam Cleat (HT91035)	- 5
Auto Release Clamcleat (CL257)	- 5

INDEX

Base for 38mm Cam Cleats	- 5
Cam Cleat (CL217Mk1)	- 5
Cam Cleat Fairlead (HT91054)	- 5
Cam Cleat Holt (HT91025)	- 6
Clam Cleat (CL223)	- 6
Clamcleat (CL234)	- 6
Clamcleat (CL236AN)	- 6
Clamcleat (CL258) Fine Line Starboard	- 6
Clamcleat (CL259) Fine Line Port	- 7
Fairlead Cam Cleat (CL231)	- 7
Fairlead Cleat (CL203)	- 7
Fairlead for 38mm Cam Cleats	- 7
Fairlead Jam Cleat (CL211)	- 7
Fairlead Jam Cleat (CL211AN)	- 8
Fairlead Jam Cleat (CL211MK2)	- 8
Fairlead Jam Cleat (CL211MK2AN)	- 8
Holt Wedge (HT91019)	- 8
Jam Cleat (CL201)	- 8
Jam Cleat midi (CL209)	- 9
Mini Jam Cleat (CL204)	- 9
Sailing Jam Cleat (CL222AN)	- 9
Side Entry Jam Cleat (CL217Mk1)	- 9

SAILING PULLEY BLOCKS & ACCESSORIES

Block Support Springs (pair)	- 4
Double Pulley Block	- 4
Fairlead (Stanchion Mounted)	- 3
Fiddle Swivel Block	- 1
Main Sheet Block	- 2
Pulley Block (Holt Line 75)	- 3
Pulley Block (Holt Plain Block 60)	- 1
Pulley Block (Stanchion Mounted)	- 3
Pulley Swivel Block (Holt Line 28)	- 2
Pulley Swivel Block (Holt Line 39)	- 2
Pulley Swivel Block (with becket)	- 2
Ratchet Pulley Block (anti-clockwise)	- 1
Ratchet Pulley Block (clockwise / port)	- 1
Ratchet Pulley Block (Holt Line 57)	- 3

SAILING TOOLS

Sailing Winch Handle, Cast Aluminium Construction, Locking Lever	- 73
Shackle Keys	- 73
Skippers Knife With Stainless Steel Locking Blade and Aluminium Body	- 73
Swivel Key Clasp, 316 Stainless Steel	- 74

SELF-TAPPING SCREWS

Self-Tapping Screws Posi Countersunk - 316 (A4) Stainless	- 14
Self-tapping screws Posi-Pan 316 (A4) Stainless	- 15
Self-Tapping Screws Slot-Countersunk (csk) 316 (A4) Stainless	- 15
Self-Tapping Screws Slot-Pan 316 (A4) Stainless	- 16

STAINLESS STEEL CLEATS

INDEX

Boat Cleats (Fixed From Underneath)	- 32
Boat Deck Bollard, Stainless Steel 316, Polished Finish	- 32
Flag Pole Cleats	- 32
Folding Boat Deck Cleat, Stainless Steel	- 33
Hollow-Base Boat Cleats (4 Fixings)	- 33
Low Flat Boat Cleats (2 Fixings)	- 34
Low Flat Boat Cleats (4 Fixings)	- 34

SWITCHES & PANELS

5-Gang Electrical Marine Switch Panel With 12V Cigarette Lighter Socket	- 28
6-Gang Electrical Marine Switch Panel	- 28
Heavy-Duty Marine Electrical Master Battery Switch, 300A 12V	- 28
Marine Electrical Kill Switch. Safety Cut Out System. Emergency Engine Stop	- 28
Marine Electrical Master Battery Switch, 100A 12V	- 29
Water Protected Bilge Pump Switch With Safety Alarm	- 29

WASHERS

Penny Washers Stainless Steel A4-Marine Grade (316) M3 M4 M5 M6 M8 M10 M12	- 17
Spring washers Stainless Steel A4-Marine Grade (316) M3 M4 M5 M6 M8 M10 M12	- 17
Washers Stainless Steel A4-Marine Grade (316) M3 M4 M5 M6 M8 M10 M12	- 18